

FORT JOHNSON, LOUISIANA

RNAV (GPS) RWY 34

APCH CRS	Rwy ldg	4107
338°	TDZE	321
	Arprt Elev	330

[USA]

MAKS AAF (KPOE)

RNP APCH - GPS

RADAR required for arrivals at DXB NDB and CATVO.

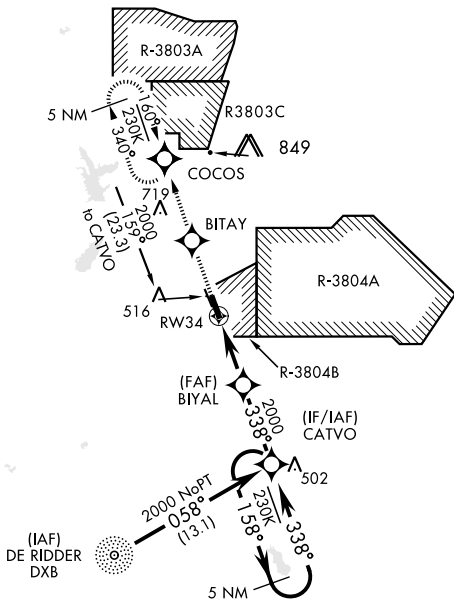
▼ *When ALS inop, increase CAT AB vis to 1 mile, CAT CD vis to 1 3/8 mile. When control tower is closed, increase visibility to 1 mile. Rwy 34 helicopter visibility reduction below 3/4 mile not authorized.



MISSED APPROACH: Climb to 2000 direct BITAY and on track 340° to COCOS and hold.

ATIS 134.85 282.2	APP CON 123.7 261.3	TOWER★ 119.0(CTAF) 257.75	GND CON 121.8 239.25	ASR/PAR
-----------------------------	-------------------------------	-------------------------------------	--------------------------------	---------

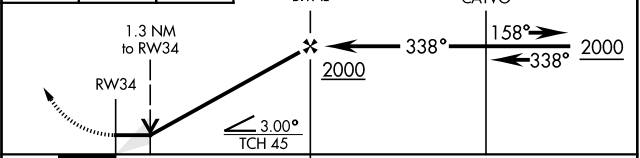
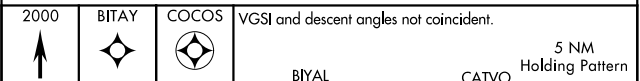
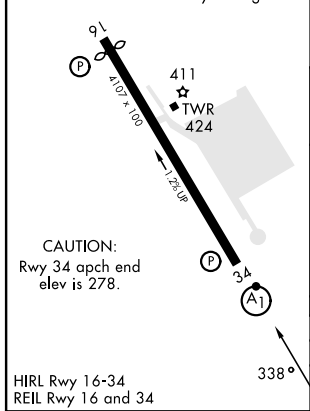
When R-3803C active, missed approach holding (COCOS) not authorized. Expect radar vectors.



SC-4, 05 SEP 2024 to 03 OCT 2024

SC-4, 05 SEP 2024 to 03 OCT 2024

ELEV	330	TDZE	321
Rwy 16 ldg 3913'			



CATEGORY	A	B	C	D
LNVA MDA*	760-3/4 439 (500-3/4)	760-1 439 (500-1)	880-1 1/2 940-2	880-1 610 (700-2)
CIRCLING	880-1 550 (600-1)	880-1 550 (600-1)	880-1 550 (600-1 1/2)	880-1 610 (700-2)

FORT JOHNSON, LOUISIANA
Amdt 2 07SEP23

31° 03' N-93° 11' W

MAKS AAF (KPOE)

RNAV (GPS) RWY 34