

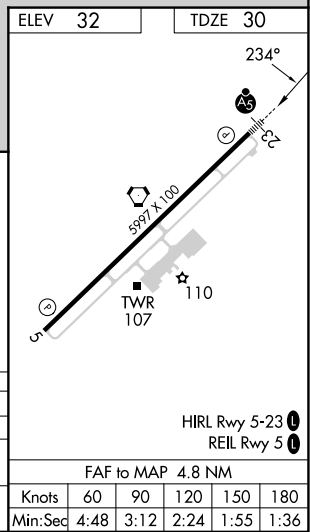
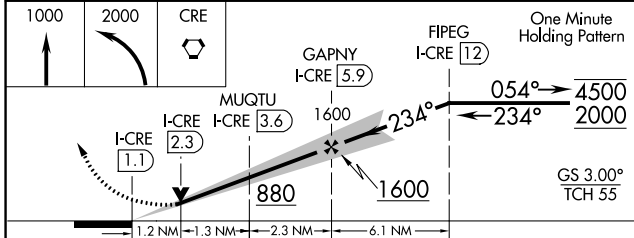
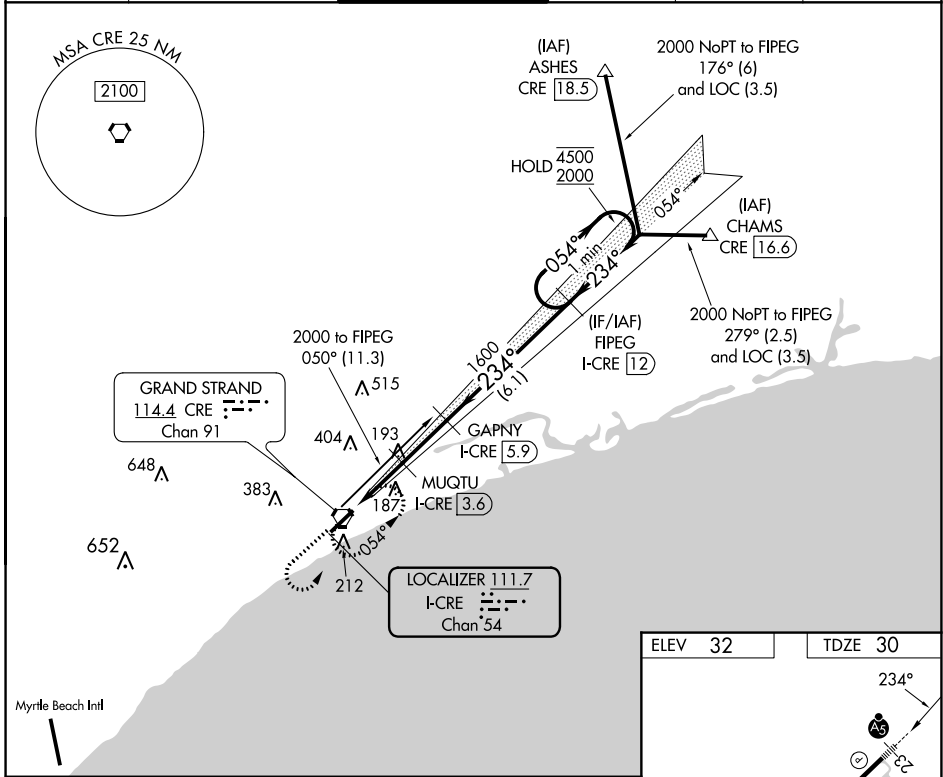
LOC/DME I-CRE <b>111.7</b> Chan <b>54</b>	APP CRS <b>234°</b>	Rwy Idg TDZE <b>30</b> Apt Elev <b>32</b>	<b>5997</b>
---	------------------------	---	-------------

# ILS or LOC RWY 23

## GRAND STRAND (CRE)

DME required.	MALSR 	MISSED APPROACH: Climb to 1000 then climbing left turn to 2000 direct CRE VORTAC and hold, continue climb-in-hold to 2000.
Rwy 23 helicopter visibility reduction below 3/4 SM NA. For inop ALS, increase S-LOC 23 Cat A/B visibility to 1 SM.		

ATIS <b>119.625</b>	MYRTLE BEACH APP CON * <b>119.2 350.3</b>	STRAND TOWER * <b>124.6 (CTAF) 0 257.6</b>	GND CON <b>121.8 257.6</b>	CLNC DEL <b>121.8</b>	UNICOM <b>122.95</b>
------------------------	--	---	-------------------------------	--------------------------	-------------------------



CATEGORY	A	B	C	D
S-ILS 23		230-1/2	200 (200-1/2)	
S-LOC 23		460-3/4	430 (500-3/4)	
CIRCLING	520-1	488 (500-1)	720-2 688 (700-2)	720-2 1/4 688 (700-2 1/4)

SE-2, 05 SEP 2024 to 03 OCT 2024

SE-2, 05 SEP 2024 to 03 OCT 2024