

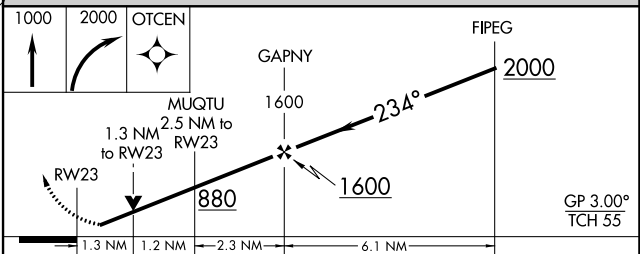
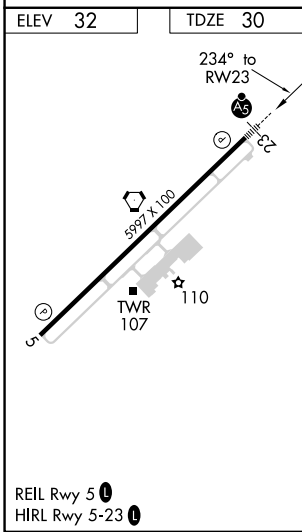
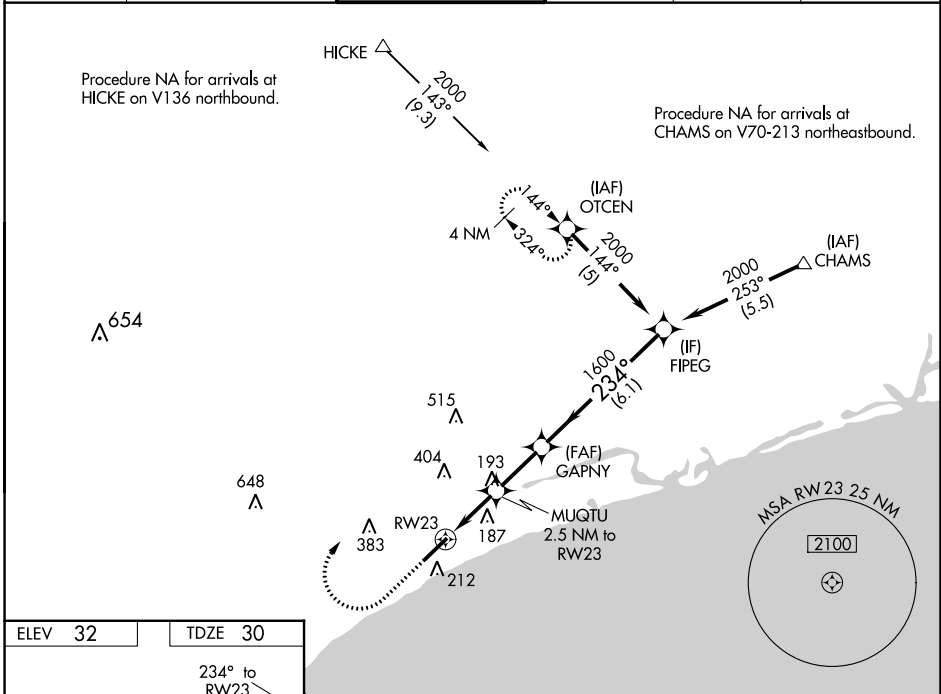
WAAS CH 42819 W23A	APP CRS 234°	Rwy Idg TDZE 30 Apt Elev 32	5997
--	------------------------	---	-------------

RNAV (GPS) RWY 23

GRAND STRAND (CRE)

RNP APCH-GPS.		MALSR	MISSED APPROACH: Climb to 1000 then climbing right turn to 2000 direct OTCEN and hold.
<p>⚠ Rwy 23 helicopter visibility reduction below 3/4 SM NA. For uncompensated Baro-VNAV systems, LNAV/VNAV NA below -7°C or above 54°C. For inop ALS, increase LNAV/VNAV all Cats visibility to 1 1/8 SM; increase LNAV Cats A/B visibility to 1 SM.</p>			

ATIS 119.625	MYRTLE BEACH APP CON* 119.2 350.3	STRAND TOWER* 124.6 (CTAF) 0 257.6	GND CON 121.8 257.6	CLNC DEL 121.8	UNICOM 122.95
------------------------	---	--	-------------------------------	--------------------------	-------------------------



CATEGORY	A	B	C	D
LPV DA		230-1/2	200 (200-1/2)	
LNAV/VNAV DA		412-3/4	382 (400-3/4)	
LNAV MDA	480-3/4	450 (500-3/4)	480-7/8	450 (500-7/8)
<input checked="" type="checkbox"/> CIRCLING	520-1	488 (500-1)	720-2 688 (700-2)	720-2 1/4 688 (700-2 1/4)

SE-2, 05 SEP 2024 to 03 OCT 2024

SE-2, 05 SEP 2024 to 03 OCT 2024