

WAAS CH <b>82519</b> <b>W05A</b>	APP CRS <b>054°</b>	Rwy Idg TDZE Apt Elev	<b>5997</b> <b>31</b> <b>31</b>
--	------------------------	-----------------------------	---------------------------------------

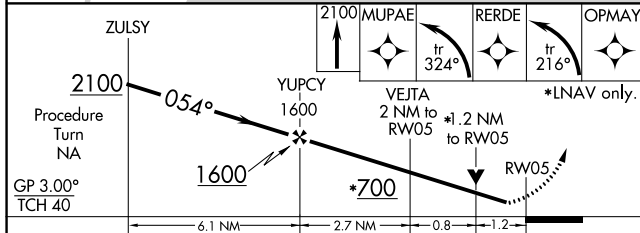
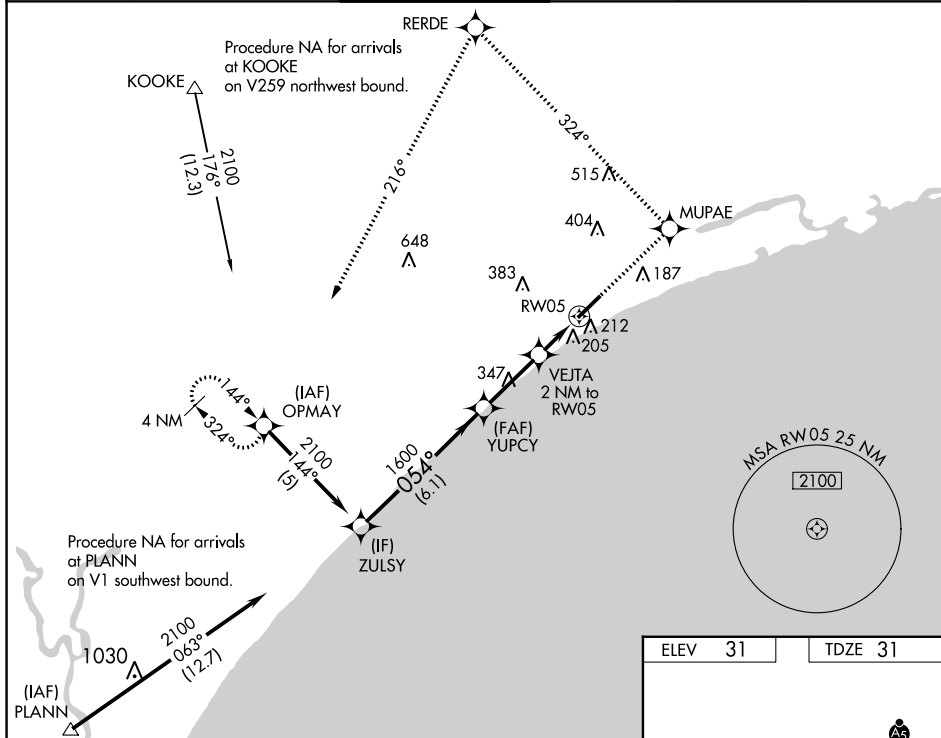
# RNAV (GPS) RWY 5

GRAND STRAND (CRE)

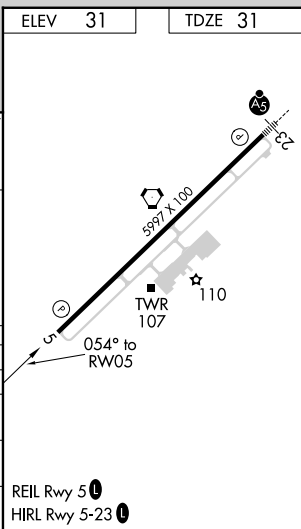
**▼** For uncompensated Baro-VNAV systems, LNAV/VNAV NA below -15°C (5°F) or above 48°C (118°F). DME/DME RNP-0.3 NA. Visibility reduction by helicopters NA. When local altimeter setting not received use Myrtle Beach Intl altimeter setting and increase all DA 31 feet and all MDA 40 feet. VDP and Baro-VNAV NA with Myrtle Beach Intl altimeter setting.

**▲** MISSED APPROACH: Climb to 2100 direct MUPAE and left turn on track 324° to RERDE and left turn on track 216° to OPMAY and hold.

ATIS <b>119.625</b>	MYRTLE BEACH APP CON* <b>119.2 350.3</b>	STRAND TOWER* <b>124.6 (CTAF) 0 257.6</b>	GND CON <b>121.8 257.6</b>	CLNC DEL <b>121.8</b>	UNICOM <b>122.95</b>
------------------------	---	--	-------------------------------	--------------------------	-------------------------



CATEGORY	A	B	C	D
LPV DA	281-1		250 (300-1)	
LNAV/VNAV DA	496-1¾		465 (500-1¾)	
LNAV MDA	460-1	429 (500-1)	460-1½ 429 (500-1½)	460-1½ 429 (500-1½)
CIRCLING	520-1	489 (500-1)	720-2 689 (700-2)	720-2½ 689 (700-2½)



SE-2, 05 SEP 2024 to 03 OCT 2024

SE-2, 05 SEP 2024 to 03 OCT 2024