

LOC/DME I-HAD <b>110.1</b> Chan 38	APP CRS <b>011°</b>	Rwy ldg <b>11500</b> TDZE <b>312</b> Apt Elev <b>312</b>
--	------------------------	--

# ILS RWY 1R (CAT II & III)

WASHINGTON DULLES INTL (IAD)

RNP APCH-GPS. From GNATZ, or HUFFF.

DME or RADAR required.  
RADAR required for procedure entry at ESPNN.

Simultaneous approach authorized.

ALSF-2

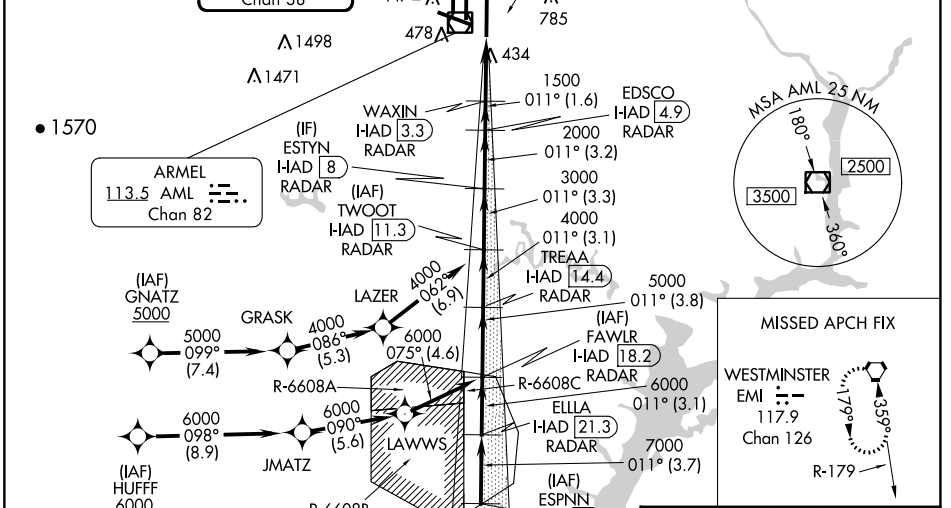
MISSED APPROACH: Climb to 800 then climbing right turn to 3000 on heading 060° and EMI VORTAC R-219 to EMI VORTAC and hold.

POTOMAC APP CON <b>120.45 306.925</b> (241°-330°) <b>128.525 306.925</b> (091°-240°) <b>126.1 338.25</b> (331°-090°)	DULLES TOWER <b>120.1 317.8</b> (Rwy 1R/19L) <b>120.25 348.6</b> (Rwy 1C/19C) <b>134.425 348.6</b> (Rwys 1L/19R and 12/30)	GN D CON <b>121.9 317.8</b> (EAST) <b>121.625 348.6</b> (WEST)	CLNC DEL <b>135.7 317.8</b>
---	---	--	--------------------------------

D-ATIS  
**134.85**

LOCALIZER **110.1**  
I-HAD  
Chan 38

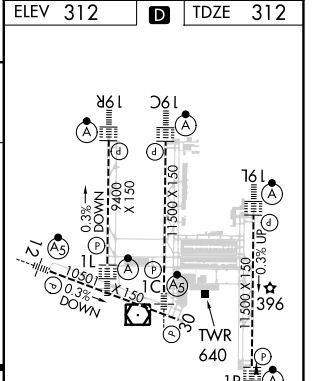
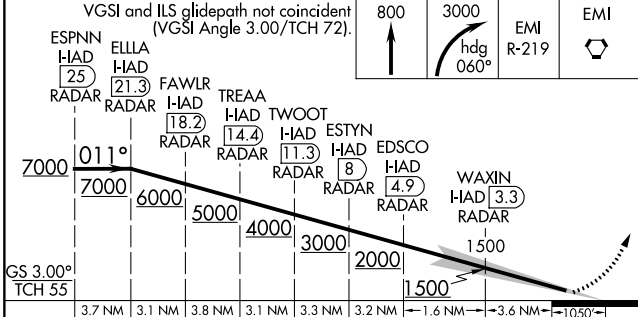
CPDLC



NE-3, 05 SEP 2024 to 03 OCT 2024

NE-3, 05 SEP 2024 to 03 OCT 2024

ELEV 312	<b>D</b>	TDZE 312
----------	----------	----------



ESPNN I-HAD 25 RADAR	ELLA I-HAD 21.3 RADAR	FAWLR I-HAD 18.2 RADAR	TREAA I-HAD 14.4 RADAR	TWOOT I-HAD 11.3 RADAR	ESTYN I-HAD 8 RADAR	EDSCO I-HAD 4.9 RADAR	WAXIN I-HAD 3.3 RADAR
3.7 NM	3.1 NM	3.8 NM	3.1 NM	3.3 NM	3.2 NM	1.6 NM	3.6 NM
CATEGORY A		CATEGORY B		CATEGORY C		CATEGORY D	
S-ILS 1R		CAT II RA 94/12		100 DA 412			
S-ILS 1R		CAT III		RVR 06			

## CATEGORY II & III ILS - SPECIAL AIRCREW & AIRCRAFT CERTIFICATION REQUIRED

TDZ/CL Rwys 1C, 1L, 1R, 12, 19C and 19R  
REIL Rwy 30  
HIRL all Rwys