

LOC/DME I-HSU <b>110.75</b> Chan <b>44 (Y)</b>	APP CRS <b>191°</b>	Rwy Idg TDZE Apt Elev	<b>9400</b> <b>278</b> <b>312</b>
--	------------------------	-----------------------------	---

# ILS or LOC RWY 19R

WASHINGTON DULLES INTL (IAD)

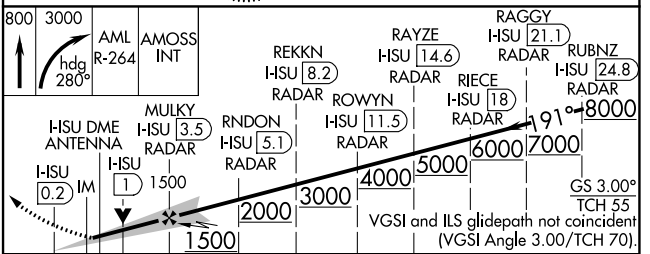
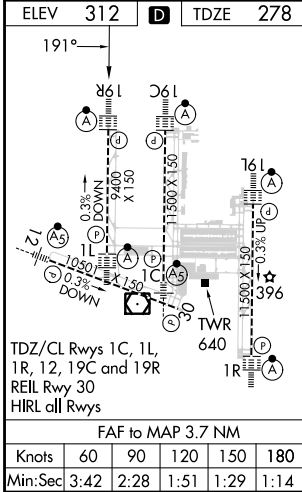
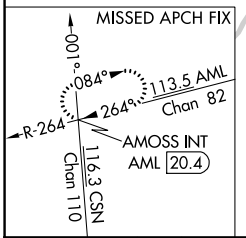
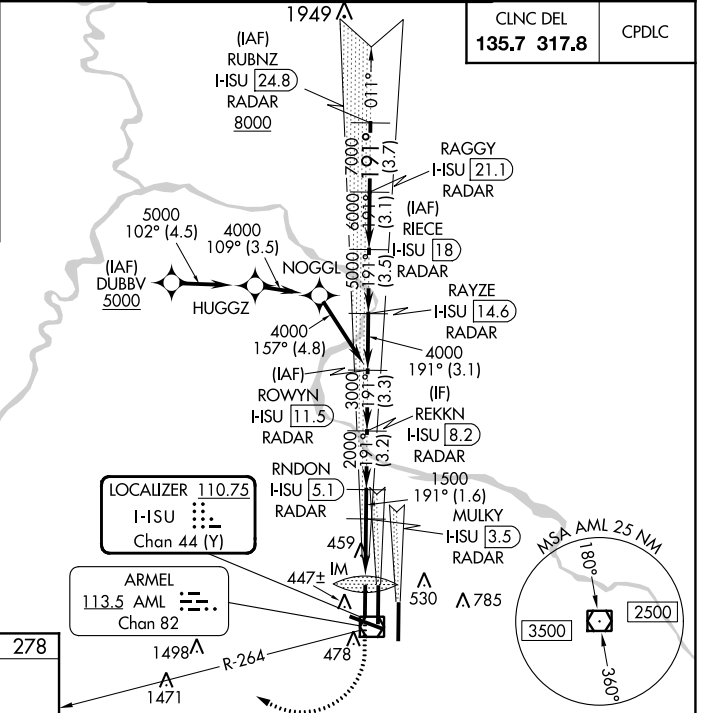
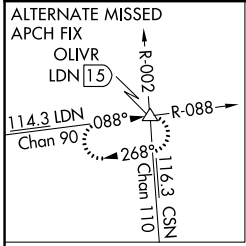
RNP APCH-GPS. From DUBBV.  
DME or RADAR required. RADAR required for procedure entry at RUBNZ.  
Simultaneous approach authorized.

ALSF-2  
MISSED APPROACH: Climb to 800 then climbing right turn to 3000 on heading 280° and AML VOR/DME R-264 to AMOSS INT/AML 20.4 DME and hold.

D-ATIS <b>134.85</b>	POTOMAC APP CON <b>120.45 306.925</b> (241°-330°) <b>128.525 306.925</b> (091°-240°) <b>126.1 338.25</b> (331°-090°)
-------------------------	---

DULLES TOWER <b>120.1 317.8</b> (Rwys 1R/19L) <b>120.25 348.6</b> (Rwys 1C/19C) <b>134.425 348.6</b> (Rwys 1L/19R and 12/30)	
---	--

GND CON <b>121.9 317.8 (EAST)</b> <b>121.625 348.6 (WEST)</b>
---



800	3000	AML R-264	AMOSS INT	REKKN I-HSU 8.2 RADAR	RAYZE I-HSU 14.6 RADAR	RAGGY I-HSU 21.1 RADAR	RUBNZ I-HSU 24.8 RADAR		
I-HSU DME ANTENNA	MULKY I-HSU 3.5 RADAR	RNDON I-HSU 5.1 RADAR	I-HSU 11.5 RADAR	I-HSU 18 RADAR	I-HSU 8.2 RADAR	I-HSU 3.5 RADAR	I-HSU 1.8 RADAR		
I-HSU 0.2	I-HSU 1	1500	2000	3000	4000	5000	6000		
0.1	1.1	2.5	1.6	3.2	3.3	3.1	3.5		
CATEGORY		A		B		C		D	
S-ILS 19R		478/18		200 (200-1/2)					
S-LOC 19R		720/24		442 (500-1/2)		720/45		442 (500-3/8)	
CIRCLING		940-1		628 (700-1)		940-1 3/4		1180-2 3/4	
						628 (700-1 3/4)		868 (900-2 3/4)	

NE-3, 05 SEP 2024 to 03 OCT 2024

NE-3, 05 SEP 2024 to 03 OCT 2024