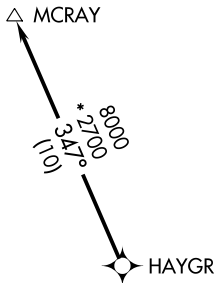
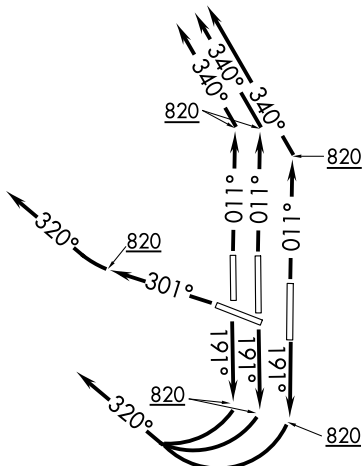


MCRAY TWO DEPARTURE (RNAV)

D-ATIS
 134.85
 CLNC DEL
 135.7 317.8
 CPDLC
 GND CON
 121.9 317.8 (EAST)
 121.625 348.6 (WEST)
 DULLES TOWER
 120.1 317.8 (Rwy 1R/19L)
 120.25 348.6 (Rwys 1C/19C)
 134.425 348.6 (Rwys 1L/19R, 12/30)
 POTOMAC DEP CON
 125.05 350.2



**TOP ALTITUDE:
3000**



- NOTE: RNAV 1.
- NOTE: DME/DME/IRU or GPS required.
- NOTE: RADAR required.
- NOTE: Turbojets only.

TAKEOFF MINIMUMS:
 Rwys 1L/C/R, 19L/C/R, 30:
 Standard with minimum climb
 of 500' per NM to 820.

NOTE: Chart not to scale.

NE-3, 05 SEP 2024 to 03 OCT 2024

NE-3, 05 SEP 2024 to 03 OCT 2024

DEPARTURE ROUTE DESCRIPTION

TAKEOFF RUNWAY 1L/C/R: Climb heading 011° to 820, then on heading 340° or as assigned by ATC, expect RADAR vectors to HAYGR, thence

TAKEOFF RUNWAYS 19L/C/R: Climb heading 191° to 820, then right turn heading 320° or as assigned by ATC, expect RADAR vectors to HAYGR, thence

TAKEOFF RUNWAY 30: Climb heading 301° to 820, then on heading 320° or as assigned by ATC, expect RADAR vectors to HAYGR, thence

. . . . on track 347° to MCRAY, maintain 3000 or as directed by ATC. Expect clearance to filed altitude within ten (10) minutes after departure.