

APP CRS	Rwy ldg	<b>11089</b>
<b>191°</b>	TDZE	<b>272</b>
	Apt Elev	<b>312</b>

# RNAV (RNP) Z RWY 19C

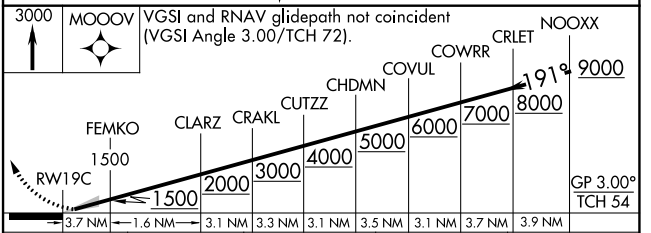
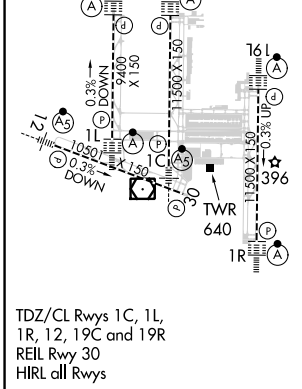
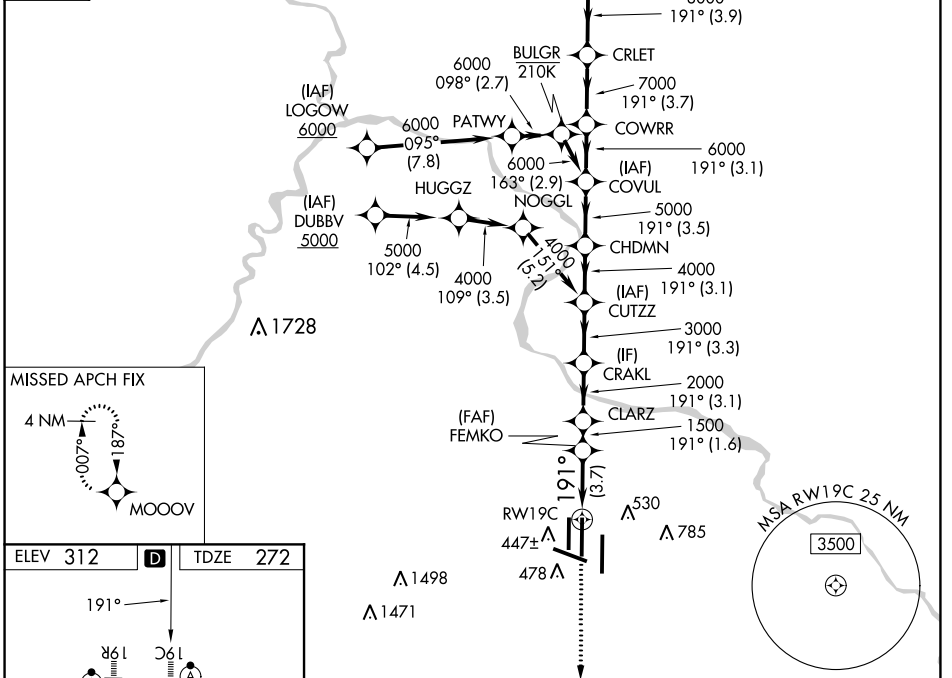
WASHINGTON DULLES INTL (IAD)

RNP AR APCH - GPS.	ALSF-2	MISSED APPROACH: Climb to 3000 direct MOOOV and hold.
▼ For uncompensated Baro-VNAV systems, procedure NA below -13°C or above 54°C. Simultaneous approach authorized. For inop ALS, increase RNP 0.11 visibility all Cats to RVR 4500, and RNP 0.25 visibility all Cats to RVR 5500.		

POTOMAC APP CON	DULLES TOWER	GND CON	CLNC DEL
<b>120.45 306.925</b> (241°-330°)	<b>120.1 317.8</b> (Rwys 1R/19L)	<b>121.9 317.8</b> (EAST)	<b>135.7 317.8</b>
<b>128.525 306.925</b> (091°-240°)	<b>120.25 348.6</b> (Rwys 1C/19C)	<b>121.625 348.6</b> (WEST)	
<b>126.1 338.25</b> (331°-090°)	<b>134.425 348.6</b> (Rwys 1L/19R and 12/30)		

D-ATIS
<b>134.85</b>

CPDLC
-------



CATEGORY	A	B	C	D
RNP 0.11 DA		554/24	282 (300-½)	
RNP 0.25 DA		624/30	352 (400-¾)	
RNP 0.30 DA		702/40	430 (400-¾)	

**AUTHORIZATION REQUIRED**

NE-3, 05 SEP 2024 to 03 OCT 2024

NE-3, 05 SEP 2024 to 03 OCT 2024