

APP CRS	Rwy Idg	<b>9400</b>
<b>191°</b>	TDZE	<b>278</b>
	Apt Elev	<b>312</b>

# RNAV (RNP) Z RWY 19R

WASHINGTON DULLES INTL (IAD)

RNP AR APCH - GPS.

▼ For uncompensated Baro-VNAV systems, procedure NA below -13°C or above 54°C. Simultaneous approach authorized. For inop ALS, increase RNP 0.30 visibility all Cats to RVR 5500.

ALS-F-2

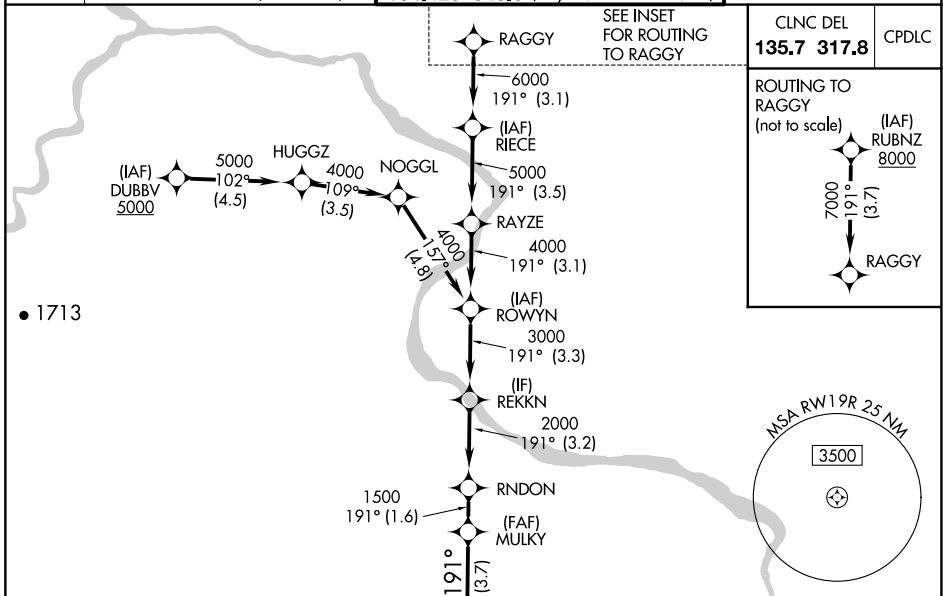


MISSED APPROACH: Climb to 800 then climbing right turn to 3000 direct AMOSS and hold.

D-ATIS <b>134.85</b>	POTOMAC APP CON	
	<b>120.45</b>	<b>306.925</b> (241°-330°)
	<b>128.525</b>	<b>306.925</b> (091°-240°)
	<b>126.1</b>	<b>338.25</b> (331°-090°)

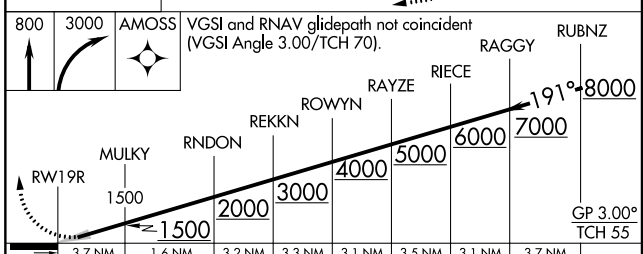
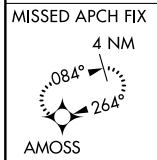
DULLES TOWER	
<b>120.1</b>	<b>317.8</b> (Rwy 1R/19L)
<b>120.25</b>	<b>348.6</b> (Rwy 1C/19C)
<b>134.425</b>	<b>348.6</b> (Rwy 1L/19R and 12/30)

GND CON	
<b>121.9</b>	<b>317.8</b> (EAST)
<b>121.625</b>	<b>348.6</b> (WEST)



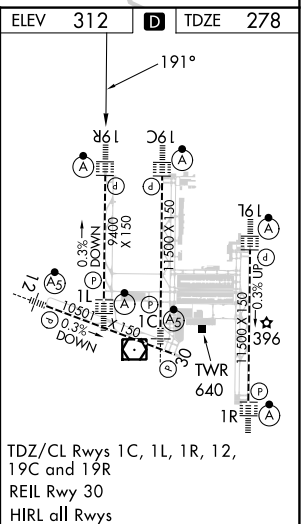
NE-3, 05 SEP 2024 to 03 OCT 2024

NE-3, 05 SEP 2024 to 03 OCT 2024



CATEGORY	A	B	C	D
RNP 0.10 DA	608/26 330 (300-½)			
RNP 0.30 DA	658/35 380 (400-¾)			

**AUTHORIZATION REQUIRED**



TDZ/CL Rwys 1C, 1L, 1R, 12, 19C and 19R  
REIL Rwy 30  
HIRL all Rwys