

APP CRS	Rwy Idg	<b>10501</b>
<b>301°</b>	TDZE	<b>288</b>
	Apt Elev	<b>312</b>

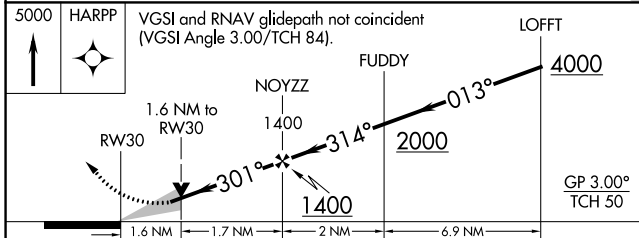
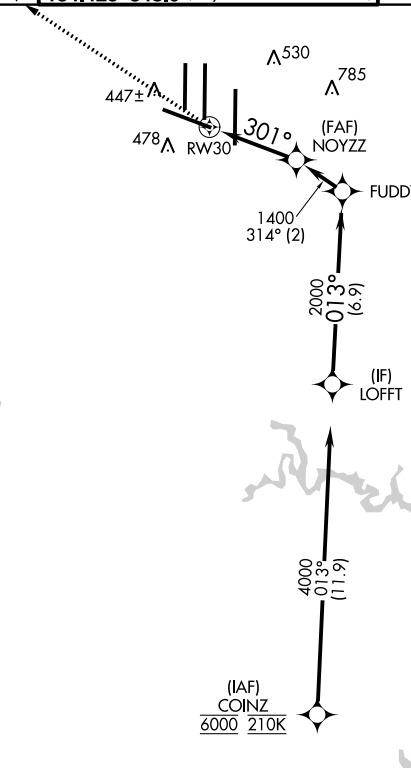
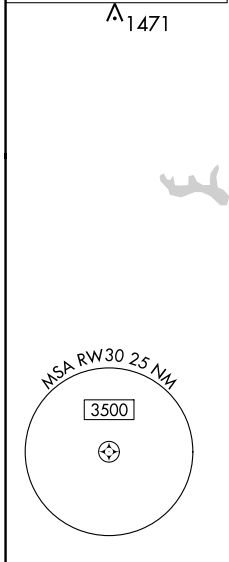
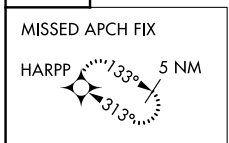
# RNAV (GPS) Y RWY 30

WASHINGTON DULLES INTL (IAD)

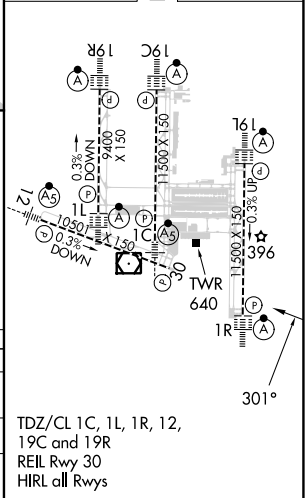
RNP APCH - GPS.	MISSED APPROACH: Climb to 5000 direct HARPP and hold.
<p>▼ For uncompensated Baro-VNAV systems, LNAV/VNAV NA below -13°C or above 54°C.</p> <p>▲ POTOMAC APP CON</p> <p><b>120.45 306.925</b> (241°-330°)</p> <p><b>128.525 306.925</b> (091°-240°)</p> <p><b>126.1 338.25</b> (331°-090°)</p>	<p>DULLES TOWER</p> <p><b>120.1 317.8</b> (Rwy 1R/19L)</p> <p><b>120.25 348.6</b> (Rwy 1C/19C)</p> <p><b>134.425 348.6</b> (Rwys 1L/19R and 12/30)</p>

GND CON	CLNC DEL
<b>121.9 317.8</b> (EAST)	<b>135.7 317.8</b>
<b>121.625 348.6</b> (WEST)	

D-ATIS	CPDLC
<b>134.85</b>	



ELEV 312	D	TDZE 288
----------	---	----------



CATEGORY	A	B	C	D
LNAV/VNAV DA	801-1 <sup>3</sup> / <sub>8</sub>		513 (500-1 <sup>3</sup> / <sub>8</sub> )	
LNAV MDA	900/55	612 (600-1)	900-1 <sup>3</sup> / <sub>4</sub>	612 (600-1 <sup>3</sup> / <sub>4</sub> )
CIRCLING	940-1	628 (700-1)	940-1 <sup>3</sup> / <sub>4</sub>	1180-2 <sup>3</sup> / <sub>4</sub>
			628 (700-1 <sup>3</sup> / <sub>4</sub> )	868 (900-2 <sup>3</sup> / <sub>4</sub> )

NE-3, 05 SEP 2024 to 03 OCT 2024

NE-3, 05 SEP 2024 to 03 OCT 2024