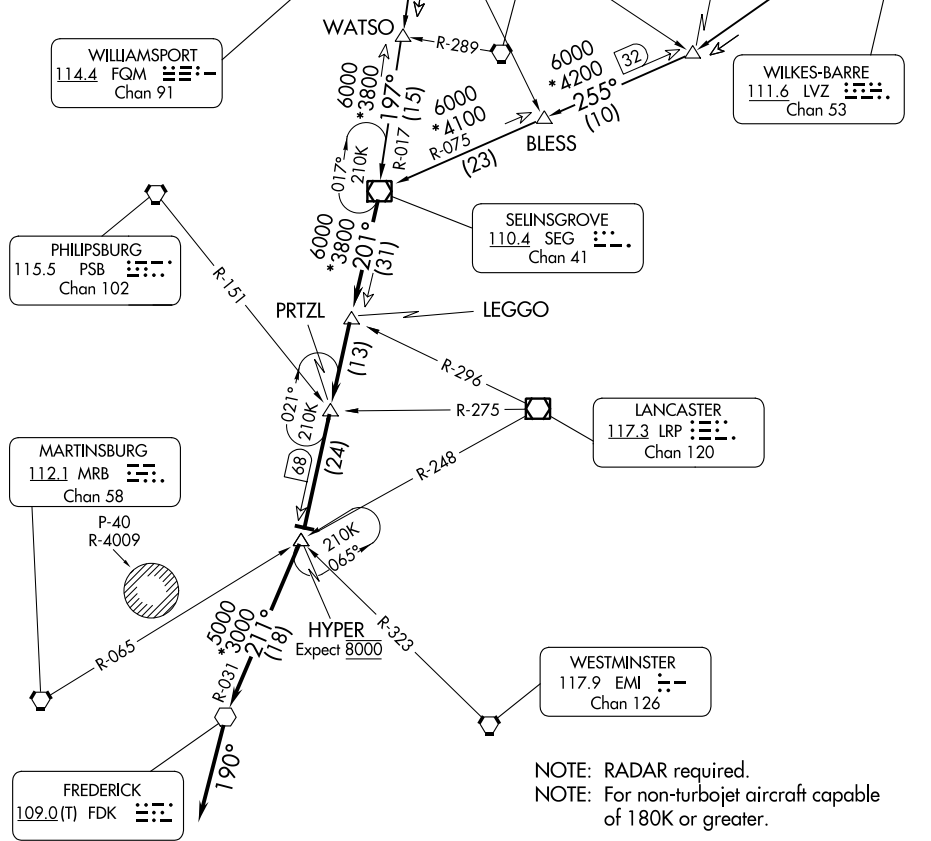


# SELINGSGROVE SIX ARRIVAL

POTOMAC APP CON

133.0 288.35  
D-ATIS  
134.85  
DULLES TOWER  
120.1 317.8 (Rwy 1R/19L)  
120.25 348.6 (Rwy 1C/19C)  
134.425 348.6 (1L/19R, 12/30)



NOTE: RADAR required.  
NOTE: For non-turbojet aircraft capable of 180K or greater.

NOTE: Chart not to scale.

## ARRIVAL ROUTE DESCRIPTION

### WILKES-BARRE TRANSITION (LVZ.SEG6):

From over LVZ VORTAC on LVZ R-246 and SEG R-075 to SEG VOR/DME. Thence....

### WILLIAMSPORT TRANSITION (FQM.SEG6):

From over FQM VOR/DME on FQM R-198 and SEG R-017 to SEG VOR/DME. Thence....

....From SEG VOR/DME on SEG R-201 to LEGGO, then on SEG R-201 to PRTZL, then on SEG R-201 to HYPER, then on FDK R-031 to FDK VOR, then on heading 190° or as assigned by ATC. Expect RADAR vectors to final approach course.

# SELINGSGROVE SIX ARRIVAL

NE-3, 05 SEP 2024 to 03 OCT 2024

NE-3, 05 SEP 2024 to 03 OCT 2024