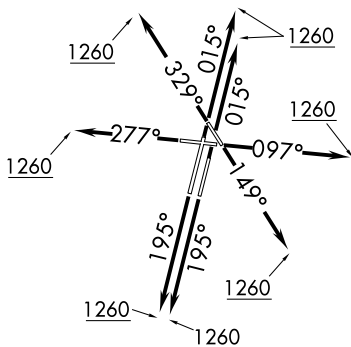


BLOKR SIX DEPARTURE (RNAV)

DUPAGE (DPA)
CHICAGO/WEST CHICAGO, ILLINOIS

ATIS
132.075
GND CON
121.8
DUPAGE TOWER
120.9 257.8
CHICAGO DEP CON
133.5 349.0

**TOP ALTITUDE:
3000**



TAKEOFF MINIMUMS:

Rwys 2L/R, 10, 20L/R, 28, 33: Standard.

Rwy 15: 300-1½ or standard with minimum climb of 205' per NM to 1000.

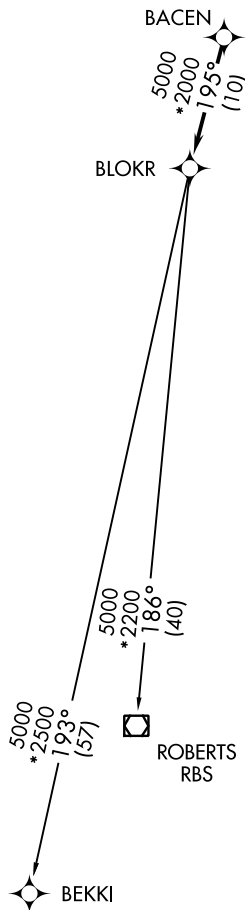
NOTE: RADAR required.

NOTE: DME/DME/IRU or GPS required.

NOTE: RNAV 1.

NOTE: Turbojet departures maintain 250K until advised by ATC.

NOTE: ROBERTS TRANSITION: For aircraft inbound to CMI or STL, or as assigned by ATC.



DEPARTURE ROUTE DESCRIPTION

TAKEOFF RUNWAYS 2L/2R: Climb heading 015° to 1260, then as assigned by ATC, for vectors to BACEN. Thence. . .

TAKEOFF RUNWAY 10: Climb heading 097° to 1260, then as assigned by ATC, for vectors to BACEN. Thence. . .

TAKEOFF RUNWAY 15: Climb heading 149° to 1260, then as assigned by ATC, for vectors to BACEN. Thence. . .

TAKEOFF RUNWAYS 20L/20R: Climb heading 195° to 1260, then as assigned by ATC, for vectors to BACEN. Thence. . .

TAKEOFF RUNWAY 28: Climb heading 277° to 1260, then as assigned by ATC, for vectors to BACEN. Thence. . .

TAKEOFF RUNWAY 33: Climb heading 329° to 1260, then as assigned by ATC, for vectors to BACEN. Thence. . .

. . . on track 195° to BLOKR, then on (transition). Maintain 3000.

Expect filed altitude 10 minutes after departure.

. . . on track 195° to BLOKR, then on (transition). Maintain 3000.

Expect filed altitude 10 minutes after departure.

BEKKI TRANSITION (BLOKR6.BEKKI):

ROBERTS TRANSITION (BLOKR6.RBS):

NOTE: Chart not to scale.

BLOKR SIX DEPARTURE (RNAV)

(BLOKR6.BLOKR) 10OCT19

CHICAGO/WEST CHICAGO, ILLINOIS
DUPAGE (DPA)

EC-3, 05 SEP 2024 to 03 OCT 2024

EC-3, 05 SEP 2024 to 03 OCT 2024