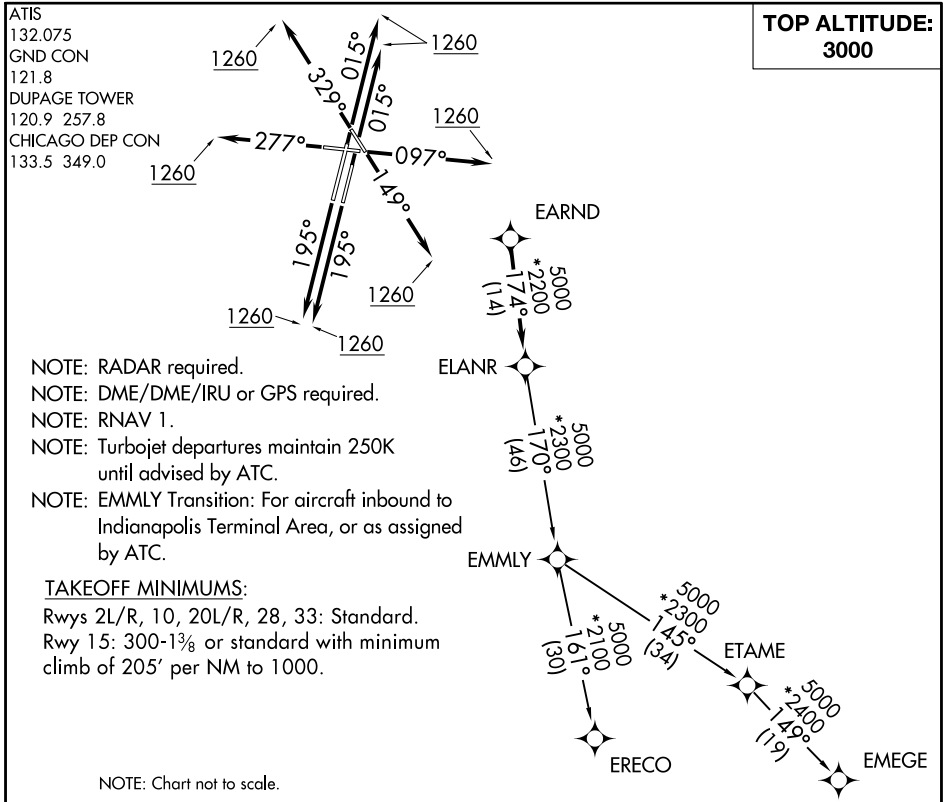


# ELANR SIX DEPARTURE (RNAV)



**TOP ALTITUDE:  
3000**

- NOTE: RADAR required.
- NOTE: DME/DME/IRU or GPS required.
- NOTE: RNAV 1.
- NOTE: Turbojet departures maintain 250K until advised by ATC.
- NOTE: EMMLY Transition: For aircraft inbound to Indianapolis Terminal Area, or as assigned by ATC.

### TAKEOFF MINIMUMS:

Rwys 2L/R, 10, 20L/R, 28, 33: Standard.  
 Rwy 15: 300-13<sup>3</sup>/<sub>8</sub> or standard with minimum climb of 205' per NM to 1000.

NOTE: Chart not to scale.

### DEPARTURE ROUTE DESCRIPTION

- TAKEOFF RUNWAY 2L/R: Climb heading 015° to 1260, then as assigned by ATC, for vectors to EARND. Thence. . .
- TAKEOFF RUNWAY 10: Climb heading 097° to 1260, then as assigned by ATC, for vectors to EARND. Thence. . .
- TAKEOFF RUNWAY 15: Climb heading 149° to 1260, then as assigned by ATC, for vectors to EARND. Thence. . .
- TAKEOFF RUNWAY 20L/R: Climb heading 195° to 1260, then as assigned by ATC, for vectors to EARND. Thence. . .
- TAKEOFF RUNWAY 28: Climb heading 277° to 1260, then as assigned by ATC, for vectors to EARND. Thence. . .
- TAKEOFF RUNWAY 33: Climb heading 329° to 1260, then as assigned by ATC, for vectors to EARND. Thence. . .

. . . on track 174° to ELANR, then on (transition). Maintain 3000. Expect filed altitude 10 minutes after departure.

- EMEGE TRANSITION (ELANR6.EMEGE):
- EMMLY TRANSITION (ELANR6.EMMLY):
- ERECO TRANSITION (ELANR6.ERECO):

# ELANR SIX DEPARTURE (RNAV)

EC-3, 05 SEP 2024 to 03 OCT 2024

EC-3, 05 SEP 2024 to 03 OCT 2024