

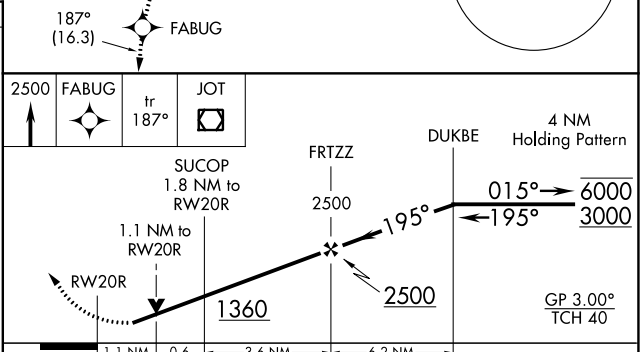
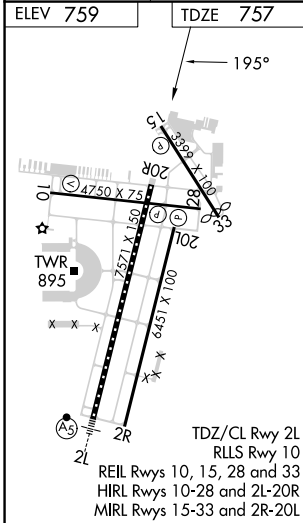
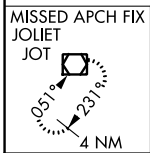
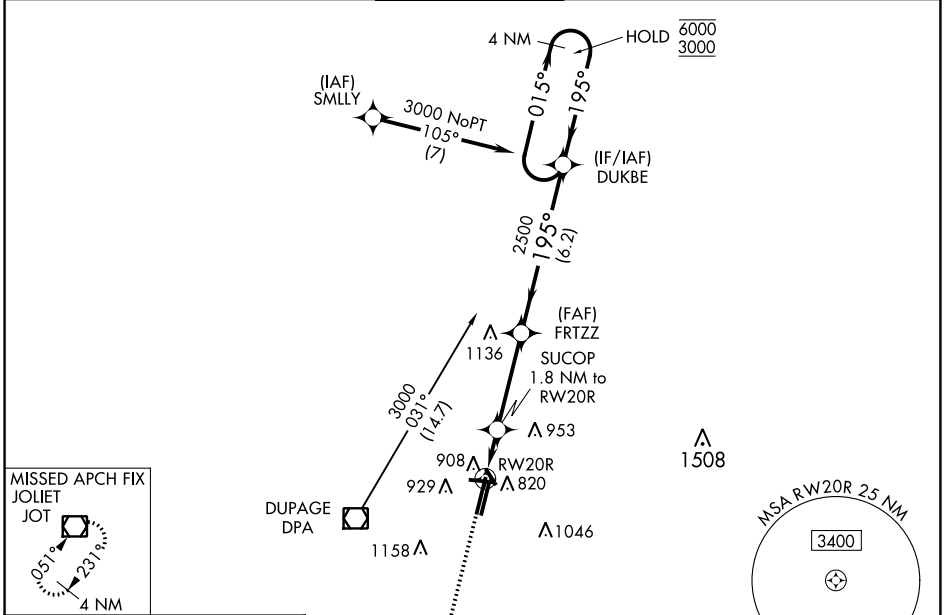
WAAS CH <b>45921</b> <b>W20A</b>	APP CRS <b>195°</b>	Rwy Idg <b>7571</b> TDZE <b>757</b> Apt Elev <b>759</b>
--	------------------------	---

# RNAV (GPS) RWY 20R

DUPAGE (DPA)

RNP APCH - GPS.		MISSED APPROACH: Climb to 2500 direct FABUG and 187° track to JOT VOR/DME and hold.		
<p>⚠ Circling Rwy 15, 28, 33 NA at night.                  ⚠ Rwy 20R helicopter visibility reduction below 3/4 SM NA.                  For uncompensated Baro-VNAV systems, LNAV/VNAV NA below -22°C or above 54°C.</p>				

ATIS <b>132.075</b>	CHICAGO APP CON <b>133.5 349.0</b>	DUPAGE TOWER <b>120.9 257.8</b>	GND CON <b>121.8</b>	CLNC DEL <b>119.75</b>
------------------------	---------------------------------------	------------------------------------	-------------------------	---------------------------



2500	FABUG	JOT	4 NM Holding Pattern	
↑	⬠	tr 187°		
SUCOP 1.8 NM to RWY 20R			2500	
1.1 NM to RWY 20R			195°	
RWY 20R			2500	
1360			6000	
1.1 NM			3000	
0.6			GP 3.00° TCH 40	
3.6 NM				
6.2 NM				
CATEGORY	A	B	C	D
LPV DA	1043-7/8		286 (300-7/8)	
LNAV/VNAV DA	1080-1		323 (400-1)	
LNAV MDA	1160-1 403 (500-1)		1160-1 1/8 403 (500-1 1/8)	
CIRCLING	1260-1		1460-2	
	501 (600-1)		701 (800-2)	
	1360-1		1460-2 1/4	
	601 (700-1)		701 (800-2 1/4)	

EC-3, 05 SEP 2024 to 03 OCT 2024

EC-3, 05 SEP 2024 to 03 OCT 2024