

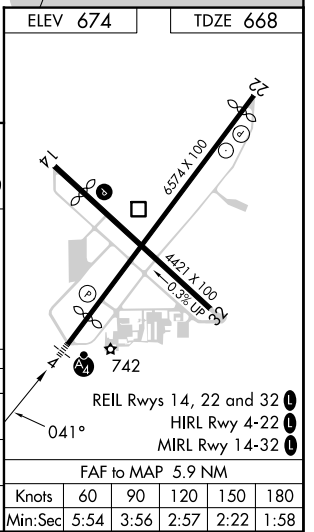
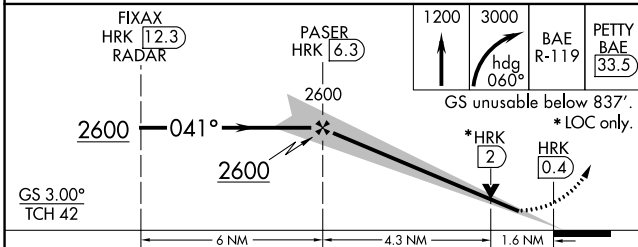
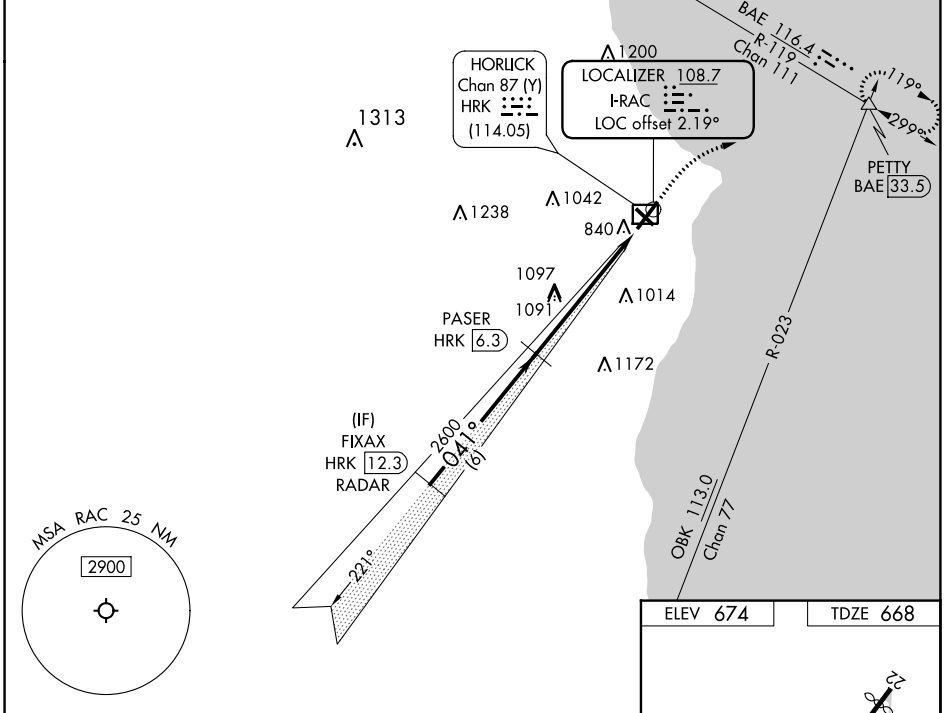
LOC I-RAC 108.7	APP CRS 041°	Rwy ldg 5840
		TDZE 668
		Apt Elev 674

ILS or LOC RWY 4

BATTEN INTL (RAC)

RADAR required for procedure entry. DME required.		MALSF	MISSED APPROACH: Climb to 1200 then climbing right turn to 3000 on heading 060° and BAE VOR/DME R-119 to PETTY/BAE 33.5 DME and hold, continue climb-in-hold to 3000.
<p>⚠ Circling Rwy 14 NA at night.</p> <p>⚠ Rwy 4 helicopter visibility reduction below ¾ SM NA. Inop table does not apply to S-ILS 4.</p> <p>DME from HRK DME. Simultaneous reception of I-RAC and HRK DME required.</p>			

ASOS 121.425	MILWAUKEE APP CON 135.875 317.725	CLNC DEL 120.15	UNICOM 123.075 (CTAF) 0
------------------------	---	---------------------------	-----------------------------------



EC-3, 05 SEP 2024 to 03 OCT 2024

EC-3, 05 SEP 2024 to 03 OCT 2024