

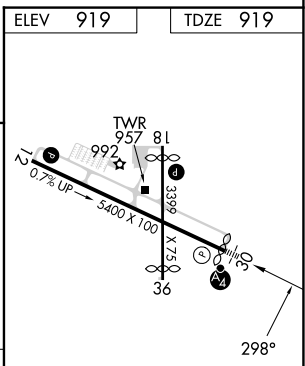
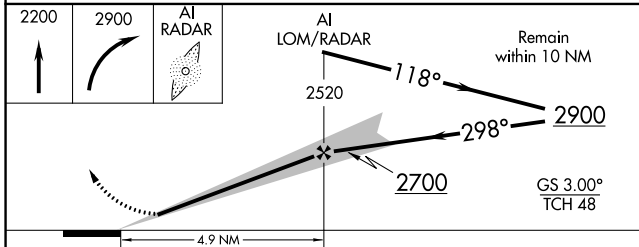
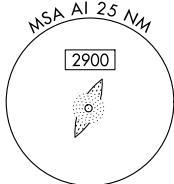
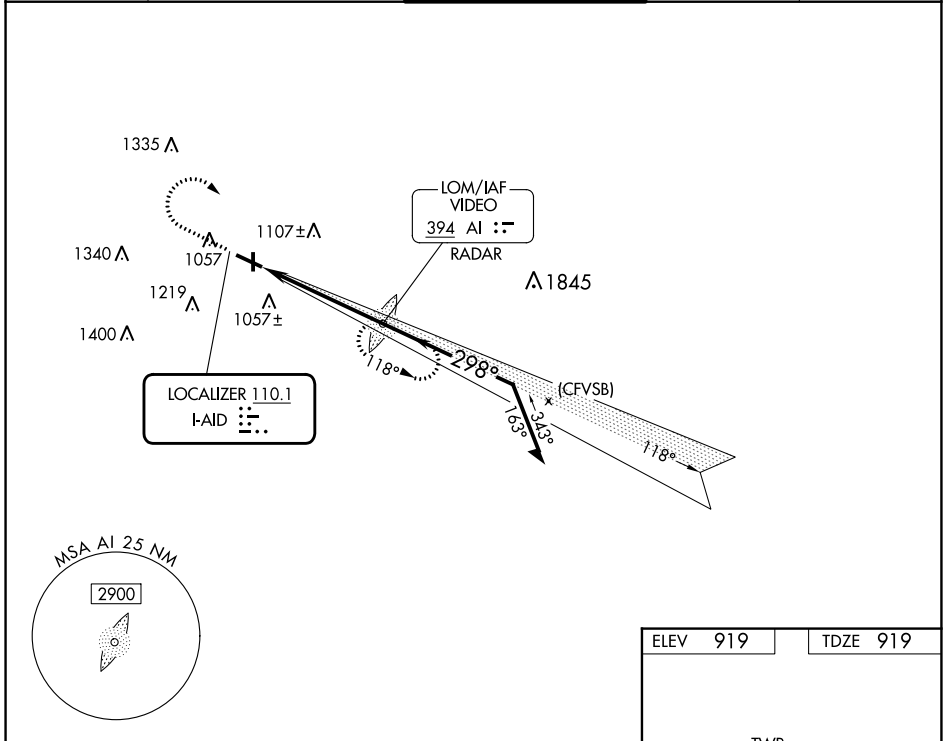
LOC I-AID 110.1	APP CRS 298°	Rwy ldg TDZE Apt Elev	5320 919 919
---------------------------	------------------------	-----------------------------	---

ILS or LOC RWY 30

ANDERSON MUNI-DARLINGTON FLD (AID)

ADF required. RADAR required for procedure entry.	MALSF ☹️	MISSED APPROACH: Climb to 2200 then climbing right turn to 2900 direct VIDEO LOM/RADAR and hold.
⚠️ Rwy 30 helicopter visibility reduction below 3/4 SM NA. ⚠️ For inop ALS, increase S-ILS 30 all Cats visibility to 3/8 SM.		

AWOS-3 128.55	INDIANAPOLIS APP CON 120.65 317.8	ANDERSON TOWER * 126.0 (CTAF) 0	GND CON 121.6	UNICOM 122.95
-------------------------	---	---	-------------------------	-------------------------



CATEGORY	A	B	C	D
S-ILS 30	1209-3/4 290 (300-3/4)			
S-LOC 30	1440-3/4	521 (600-3/4)	1440-1 1/4	521 (600-1 1/4)
CIRCLING	1440-1	521 (600-1)	1520-1 3/4 601 (700-1 3/4)	1520-2 601 (700-2)

REIL Rwy 12	
MIRL Rws 12-30 and 18-36	0
FAF to MAP 4.9 NM	
Knots	60 90 120 150 180
Min:Sec	4:54 3:16 2:27 1:58 1:38

EC-2, 05 SEP 2024 to 03 OCT 2024

EC-2, 05 SEP 2024 to 03 OCT 2024