

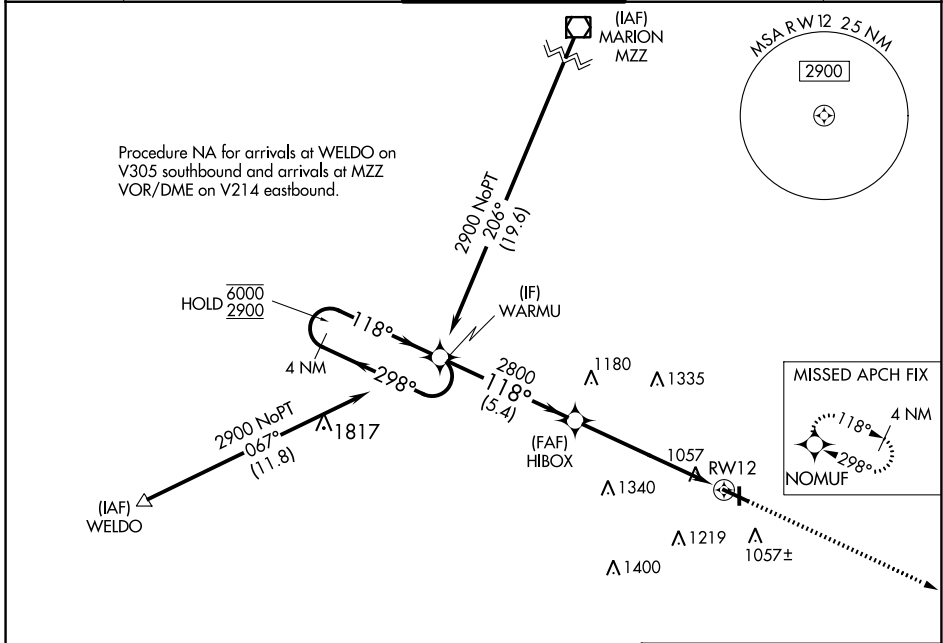
WAAS CH <b>61343</b> <b>W12A</b>	APP CRS <b>118°</b>	Rwy Idg TDZE Apt Elev	<b>5400</b> <b>897</b> <b>919</b>
--	------------------------	-----------------------------	---

# RNAV (GPS) RWY 12

ANDERSON MUNI-DARLINGTON FLD (A1D)

RNP APCH.	MISSED APPROACH: Climb to 3000 direct NOMUF and hold.
For uncompensated Baro-VNAV systems, procedure NA below -16°C or above 54°C.	

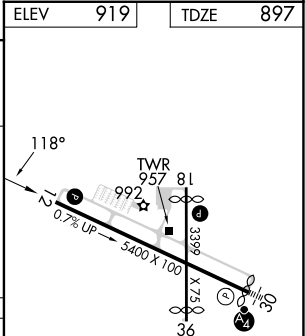
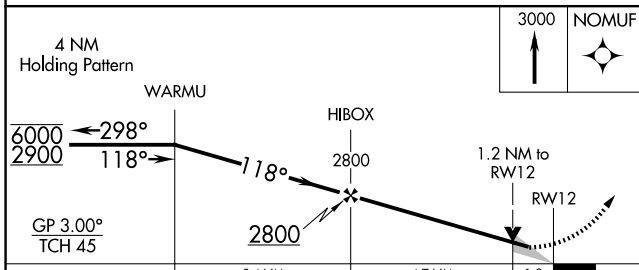
AWOS-3 <b>128.55</b>	INDIANAPOLIS APP CON <b>120.65 317.8</b>	ANDERSON TOWER ★ <b>126.0 (CTAF) 0</b>	GND CON <b>121.6</b>	UNICOM <b>122.95</b>
-------------------------	---	---	-------------------------	-------------------------



EC-2, 05 SEP 2024 to 03 OCT 2024

EC-2, 05 SEP 2024 to 03 OCT 2024

ELEV	919	TDZE	897
------	-----	------	-----



CATEGORY	A	B	C	D
LPV DA		1157- <sup>3</sup> / <sub>4</sub>	260 (300- <sup>3</sup> / <sub>4</sub> )	
LNAV/VNAV DA		1218-1	321 (300-1)	
LNAV MDA	1340-1	443 (500-1)	1340-1 <sup>3</sup> / <sub>8</sub>	443 (500-1 <sup>3</sup> / <sub>8</sub> )
CIRCLING	1360-1 441 (500-1)	1400-1 481 (500-1)	1520-1 <sup>3</sup> / <sub>4</sub> 601 (700-1 <sup>3</sup> / <sub>4</sub> )	1520-2 601 (700-2)

MIRL Rwy 12-30 and 18-36  
REL Rwy 12