

WAAS CH <b>56415</b> <b>W30A</b>	APP CRS <b>298°</b>	Rwy ldg TDZE Apt Elev	<b>5320</b> <b>919</b> <b>919</b>
--	------------------------	-----------------------------	---

# RNAV (GPS) RWY 30

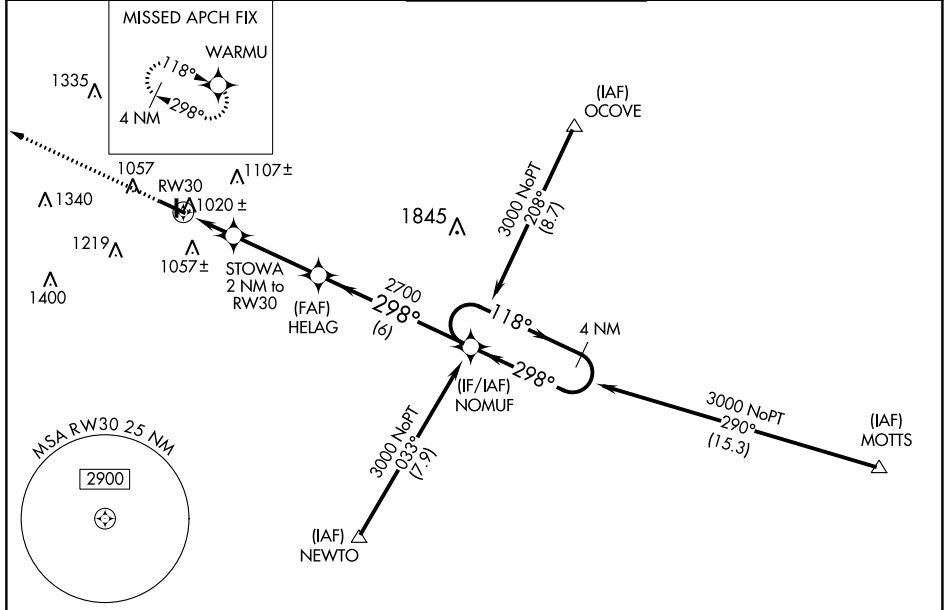
ANDERSON MUNI-DARLINGTON FLD (A1D)

RNP APCH

For uncompensated Baro-VNAV systems, LNAV/VNAV NA below -16°C (4°F) or above 47°C (116°F). When local altimeter setting not received, use Muncie altimeter setting and increase all DA 32 feet and all MDA 40 feet, and increase LPV and LNAV/VNAV all Cats and LNAV Cat C visibility ¼ mile. Inoperative table does not apply.  
Rwy 30 helicopter visibility reduction below ¾ SM NA.

MALSIF 	MISSED APPROACH: Climb to 3000 direct WARMU and hold.
------------	---

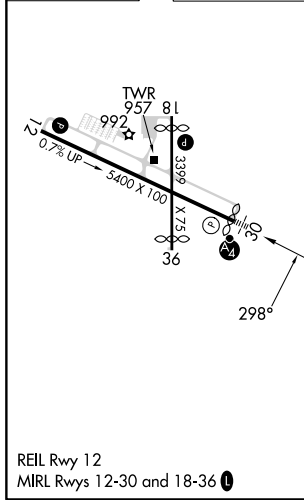
AWOS-3 <b>128.55</b>	INDIANAPOLIS APP CON <b>120.65 317.8</b>	ANDERSON TOWER * <b>126.0</b> (CTAF)	GND CON <b>121.6</b>	UNICOM <b>122.95</b>
-------------------------	---	---	-------------------------	-------------------------



EC-2, 05 SEP 2024 to 03 OCT 2024

EC-2, 05 SEP 2024 to 03 OCT 2024

ELEV	919	TDZE	919
------	-----	------	-----



3000	WARMU	4 NM Holding Pattern			
*LNAV only	STOWA 2 NM to RW30	HELAG	NOMUF	118° → 3000	
	1 NM to RW30			← 298°	GP 3.00° TCH 48
	RW30	1600*	2700	298°	
	1 NM	1 NM	3.4 NM	6 NM	
CATEGORY	A	B	C	D	
LPV DA	1234-1		315 (400-1)		
LNAV/VNAV DA	1367-1½		448 (500-1½)		
LNAV MDA	1300-1		381 (400-1)		1300-1¼ 381 (400-1¼)
CIRCLING	1360-1 441 (500-1)	1400-1 481 (500-1)	1520-1¾ 601 (700-1¾)	1520-2 601 (700-2)	