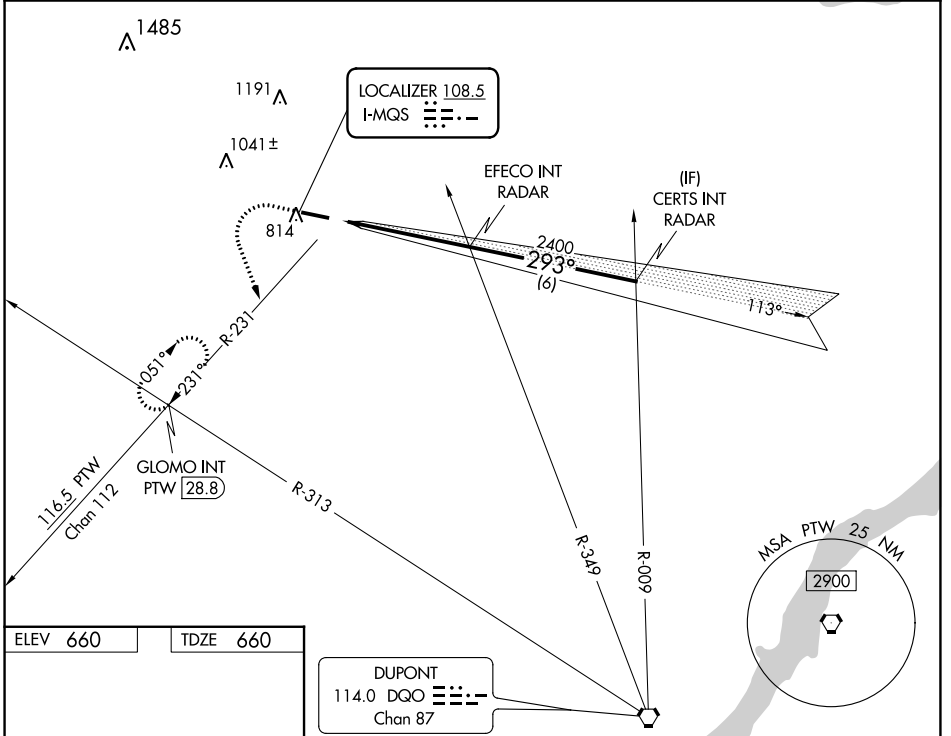


LOC I-MQS <b>108.5</b>	APP CRS <b>293°</b>	Rwy ldg TDZE Apt Elev <b>5400</b> <b>660</b> <b>660</b>
---------------------------	------------------------	--

# ILS or LOC RWY 29

CHESTER COUNTY G O CARLSON (MQS)

RADAR required for procedure entry.		MISSED APPROACH: Climb to 3000 then climbing left turn to 3000 on heading 170° and PTW R-231 to GLOMO INT/PTW 28.8 DME and hold, continue climb-in-hold to 3000.	
AWOS-3 <b>126.25</b>	PHILADELPHIA APP CON <b>124.35 319.15</b>	CLNC DEL <b>125.6</b>	UNICOM <b>122.7 (CTAF) 0</b>

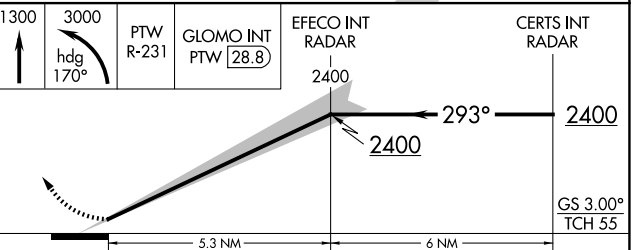
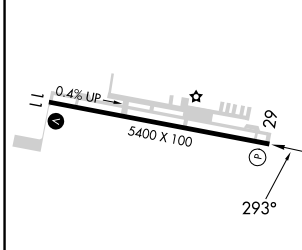


NE-4, 05 SEP 2024 to 03 OCT 2024

NE-4, 05 SEP 2024 to 03 OCT 2024

ELEV 660	TDZE 660
----------	----------

DUPONT 114.0 DGO Chan 87
--------------------------------



		1300	3000	PTW R-231	GLOMO INT PTW 28.8	EFECO INT RADAR 2400	CERTS INT RADAR 2400
		↑	hdg 170°			2400	2400
						2400	GS 3.00° TCH 55
						5.3 NM	6 NM
CATEGORY		A	B	C	D		
S-ILS 29			910-3/4	250 (300-3/4)			
S-LOC 29			1040-1	380 (400-1)			
CIRCLING		1140-1 480 (500-1)	1240-1 580 (600-1)	1260-1 1/2 600 (600-1 1/2)	1420-2 1/2 760 (800-2 1/2)		