

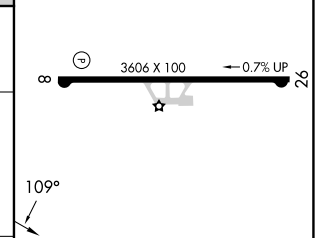
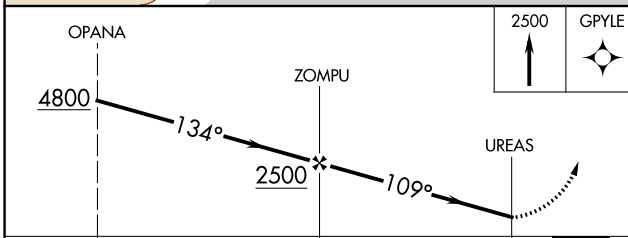
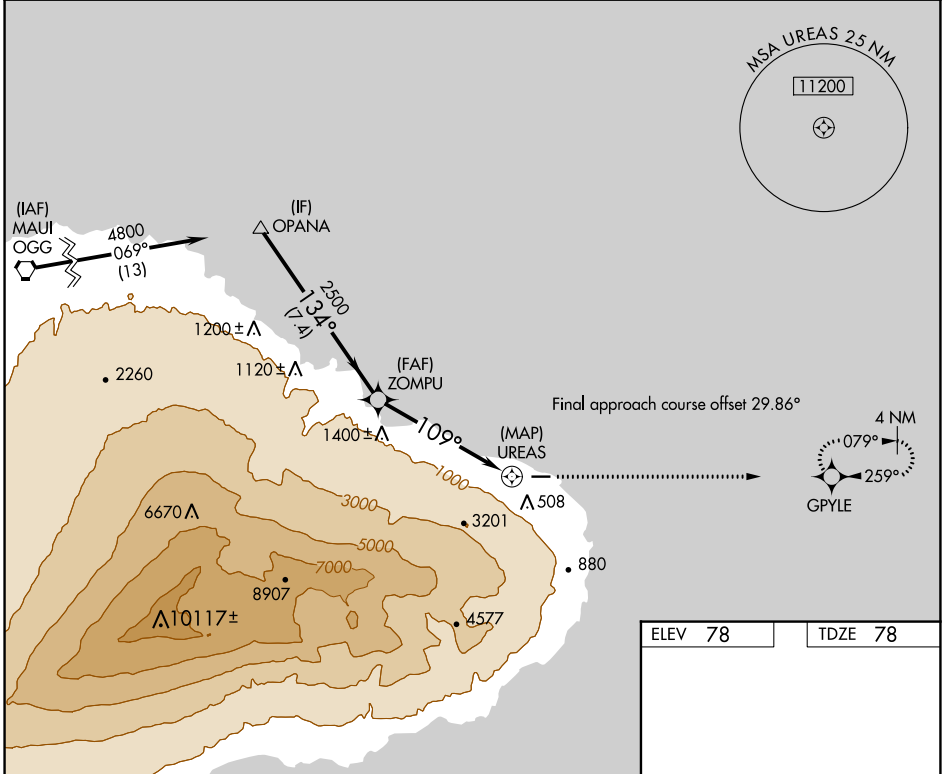
APP CRS	Rwy Idg	3606
109°	TDZE	78
	Apt Elev	78

RNAV (GPS) RWY 8

HANA (HNM)(PHHN)

RNP APCH.	<p>⚠ NA Circling NA south of Rwy 8-26. Procedure NA at night. Rwy 8 helicopter visibility reduction below 1 SM NA. When local altimeter setting not received, procedure NA.</p>	MISSED APPROACH: Climb to 2500 direct GPYLE and hold.

AWOS-3PT 118.325	HCF CENTER 118.45 278.3	CLNC DEL 122.3	CTAF 122.9
----------------------------	-----------------------------------	--------------------------	----------------------



CATEGORY	A	B	C	D
LNVA MDA	1500-1¼ 1422 (1500-1¼)	1500-1½ 1422 (1500-1½)	NA	
CIRCLING	1500-1¼ 1422 (1500-1¼)	1500-1½ 1422 (1500-1½)	NA	

MRL Rwy 8-26

PAC, 05 SEP 2024 to 31 OCT 2024

PAC, 05 SEP 2024 to 31 OCT 2024