


LOC I-HIB 108.75	APP CRS 310°	Rwy Idg TDZE Apt Elev	6758 1345 1354
----------------------------	------------------------	-----------------------------	---

ILS or LOC RWY 31

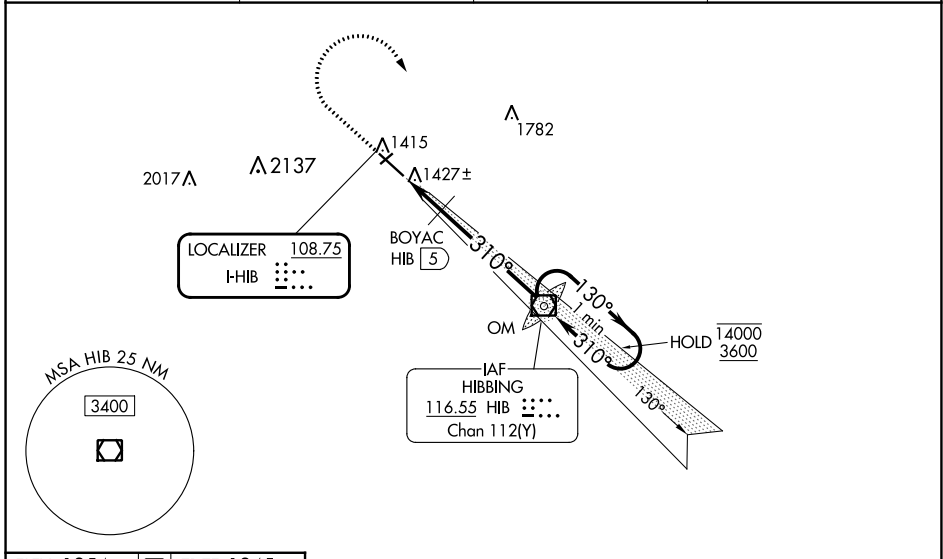
RANGE RGNL (HIB)

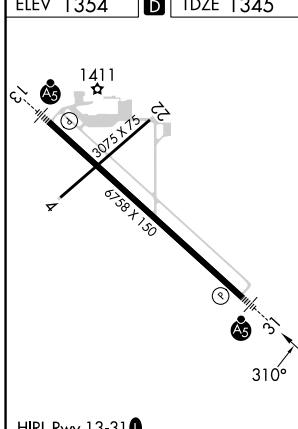
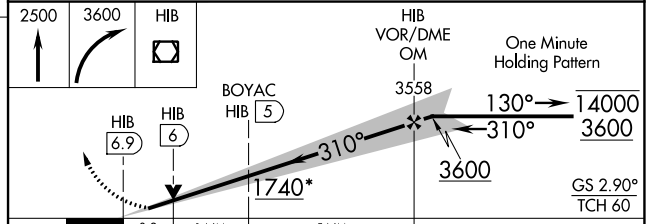
⚠ VDP NA when using Eveleth altimeter setting. Caution opposing ILS continuously on. When local altimeter setting not received, use Eveleth altimeter setting and increase S-ILS 31 DA to 1581 feet; increase all MDAs 40 feet and increase S-LOC 31 Cat C/D visibility ½ SM and Circling Cat C ¼ SM. Increase BOYAC fix minimums S-LOC 31 Cat C/D visibility ½ SM and Circling Cat C ¼ SM. #DME from HIB VOR/DME. DME use requires simultaneous reception of I-HIB and HIB DME.
*****1780 when using Eveleth altimeter setting. For inop ALS when using Eveleth altimeter setting, increase BOYAC fix minimums S-LOC 31 Cat C/D visibility to 1 SM.

MALSRL


MISSED APPROACH: Climb to 2500 then climbing right turn to 3600 direct HIB VOR/DME and hold.

ASOS 126.425	DULUTH APP CON 125.45 233.7	CLNC DEL 127.4	UNICOM 123.0 (CTAF) 0
------------------------	---------------------------------------	--------------------------	---------------------------------



ELEV 1354	D	TDZE 1345	2500	3600	HIB	HIB VOR/DME OM	One Minute Holding Pattern
							
CATEGORY	A		B		C		D
S-ILS 31	1545-½		200 (200-½)				
S-LOC 31	1740-½ 395 (400-½)		1740-⅝ 395 (400-⅝)				
CIRCLING	1900-1 546 (600-1)		1920-1½ 566 (600-1½)		1980-2 626 (700-2)		
# BOYAC FIX MINIMUMS							
S-LOC 31	1680-½ 335 (400-½)						
CIRCLING	1900-1 546 (600-1)		1920-1½ 566 (600-1½)		1980-2 626 (700-2)		
HIRL Rwy 13-31							
FAF to MAP 6.9 NM							
Knots	60	90	120	150	180		
Min:Sec	6:54	4:36	3:27	2:46	2:18		

NC-1, 05 SEP 2024 to 03 OCT 2024

NC-1, 05 SEP 2024 to 03 OCT 2024