

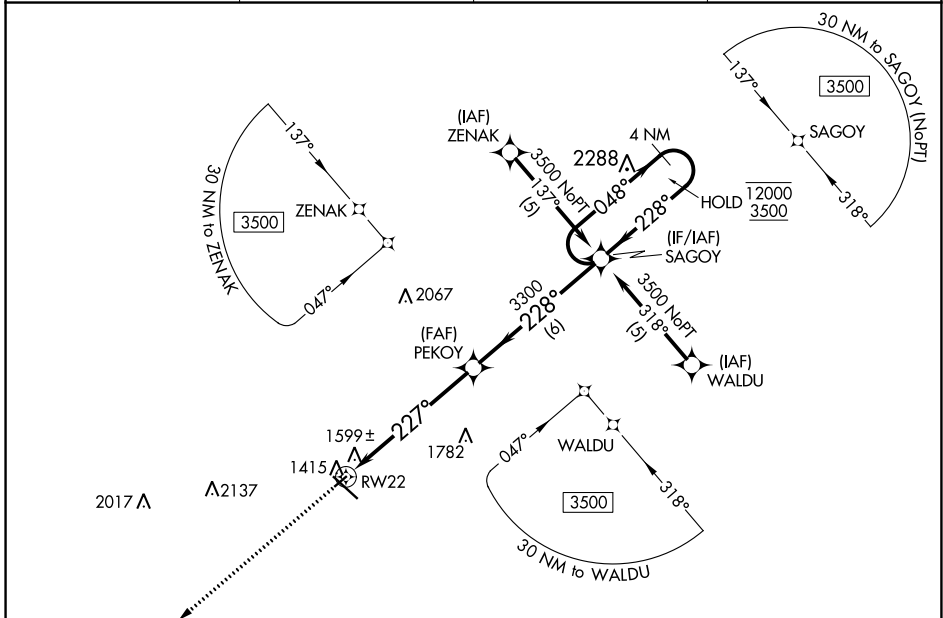
APP CRS 227°	Rwy Idg TDZE Apt Elev	3075 1352 1354
------------------------	-----------------------------	---

RNAV (GPS) RWY 22

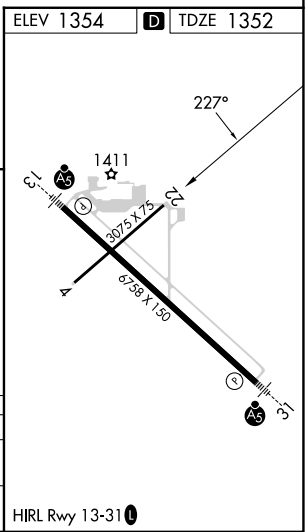
RANGE RGNL (HIB)

RNP APCH - GPS.		MISSED APPROACH: Climb to 3500 direct SEYOP and hold.	
<p>⚠ Rwy 22 helicopter visibility reduction below 3/4 SM NA. VDP NA when using Ezeleth altimeter setting. When local altimeter setting not received, use Ezeleth altimeter setting and increase all MDAs 40 feet.</p>			

ASOS 126.425	DULUTH APP CON 125.45 233.7	CLINC DEL 127.4	UNICOM 123.0 (CTAF) 0
------------------------	---------------------------------------	---------------------------	---------------------------------



ELEV 1354	TDZE 1352
SEYOP	3500
PEKOY	SAGOY
1.5 NM to RW22	4 NM Holding Pattern
1.5 NM	4.6 NM
6 NM	
3500	12000
3300	3500
2.99°	048°
TCH 45	228°
227°	228°
227°	228°
1.5 NM	4.6 NM
6 NM	
CATEGORY	A
LNAV MDA	1860-1 508 (600-1)
CIRCLING	1900-1 546 (600-1)



NC-1, 05 SEP 2024 to 03 OCT 2024

NC-1, 05 SEP 2024 to 03 OCT 2024