

LOC I-BMG 108.3	APP CRS 354°	Rwy Idg TDZE Apt Elev	6500 844 846
---------------------------	------------------------	-----------------------------	---

ILS or LOC/DME RWY 35

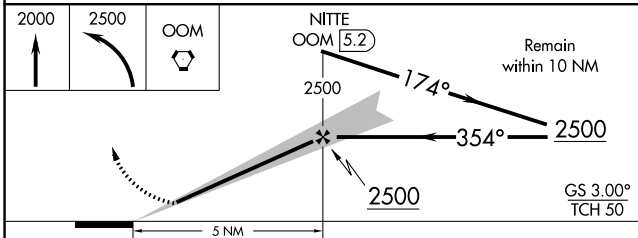
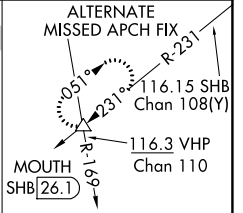
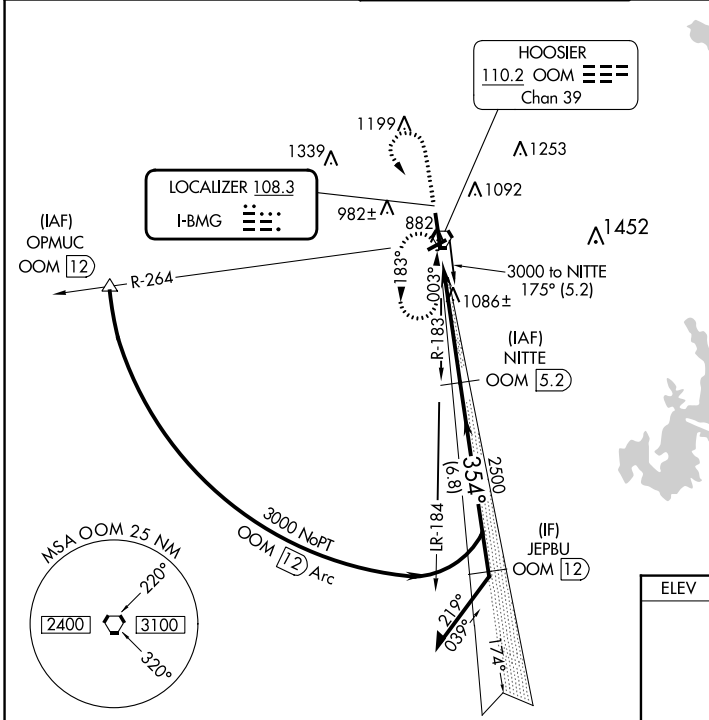
MONROE COUNTY (BMG)

⚠ Circling to Rwy 6/24 NA at night. When local altimeter setting not received, use Terre Haute Rgnl altimeter setting; increase S-ILS 35 DA to 1165 and all MDA 140 feet and increase S-ILS 35 all Cats visibility ¼ SM, S-LOC 35 Cat C and D and Circling Cat C and D visibility ½ SM. For inoperative MALSRR when using Terre Haute Rgnl altimeter setting; increase S-ILS 35 all Cats visibility to 1¼ miles. DME from OOM VORTAC. Simultaneous reception of I-BMG and OOM DME required.

MALSRR
A5

MISSED APPROACH:
Climb to 2000 then climbing left turn to 2500 direct OOM VORTAC and hold.

ASOS 134.525	HULMAN APP CON 128.025 339.8	BLOOMINGTON TOWER * 120.775 (CTAF) 0	GND CON 121.9	UNICOM 122.95
------------------------	--	---	-------------------------	-------------------------



DME REQUIRED

ELEV 846	TDZE 844
HIRL Rwy 17-35	1
MIRL Rwy 6-24	1
REIL Rwy 17	1
FAF to MAP 5 NM	
Knots	60 90 120 150 180
Min:Sec	5:00 3:20 2:30 2:00 1:40

CATEGORY	A	B	C	D
S-ILS 35	1044-½ 200 (200-½)			
S-LOC 35	1420-½ 576 (600-½)		1420-1 576 (600-1)	1420-1¼ 576 (600-1¼)
CIRCLING	1420-1 574 (600-1)		1420-1½ 574 (600-½)	1620-2½ 774 (800-2½)

EC-2, 05 SEP 2024 to 03 OCT 2024

EC-2, 05 SEP 2024 to 03 OCT 2024