

| | | | |
|--|------------------------|-----------------------------|---|
| WAAS CH 72711 W13A | APP CRS 133° | Rwy Idg TDZE Apt Elev | 6504 1115 1119 |
|--|------------------------|-----------------------------|---|

RNAV (GPS) RWY 13

THIEF RIVER FALLS RGNL (TVF)

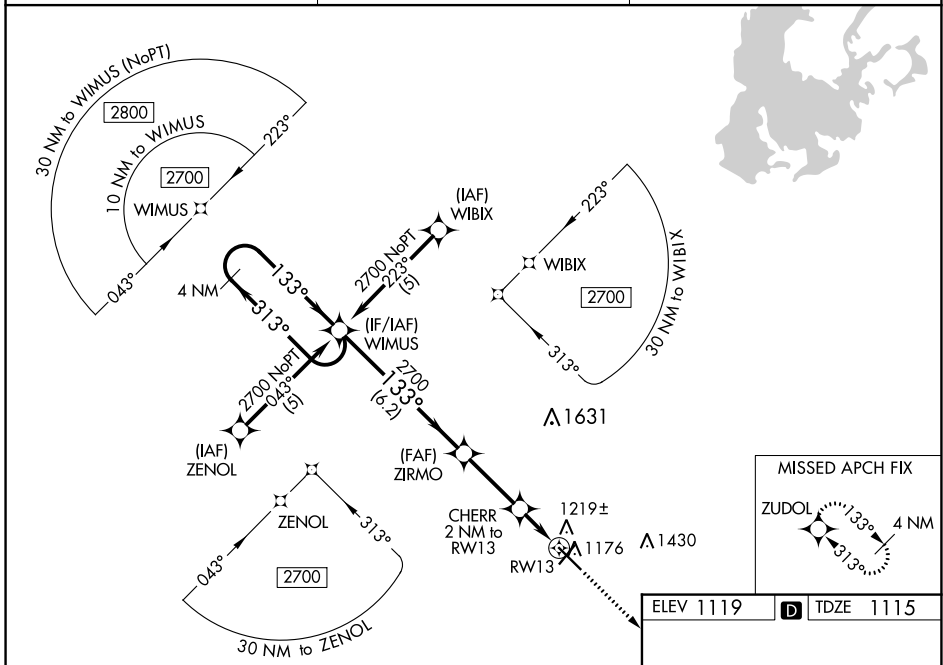
⚠ Baro-VNAV and VDP NA when using Crookston altimeter setting. For uncompensated Baro-VNAV systems, LNAV/VNAV NA below -17°C (2°F) or above 54°C (130°F). DME/DME RNP-0.3 NA.
⚠ When local altimeter setting not received, use Crookston altimeter setting: increase LPV DA to 1447 feet and all visibilities $\frac{1}{8}$ SM; increase LNAV/VNAV DA to 1518 feet and all visibilities $\frac{1}{4}$ SM; increase all MDAs 100 feet and visibility Cats C and D $\frac{3}{8}$ SM.

MISSED APPROACH:
Climb to 2700 direct ZUDOL and hold.

AWOS-3PT
119.025

MINNEAPOLIS CENTER
132.15 269.6

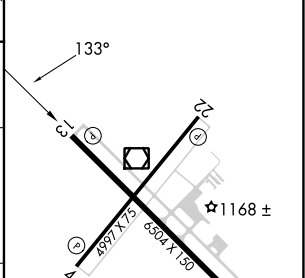
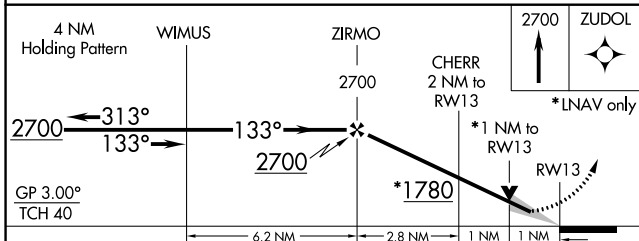
UNICOM
122.8 (CTAF) ①



NC-1, 05 SEP 2024 to 03 OCT 2024

NC-1, 05 SEP 2024 to 03 OCT 2024

ELEV 1119 **D** TDZE 1115



| CATEGORY | A | B | C | D |
|-------------------|-----------------------|-----------------------|----------------------------|--|
| LPV DA | 1365-1 | | 250 (300-1) | |
| LNAV/VNAV DA | 1436-1 $\frac{1}{4}$ | | 321 (400-1 $\frac{1}{4}$) | |
| LNAV MDA | 1480-1 | 365 (400-1) | | 1480-1 $\frac{1}{4}$ 365 (400-1 $\frac{1}{4}$) |
| C CIRCLING | 1540-1 421 (500-1) | 1580-1 461 (500-1) | 1820-2 701 (800-2) | 1980-2 $\frac{3}{4}$ 861 (900-2 $\frac{3}{4}$) |

HIRL Rwy 13-31 ①
 MRL Rwy 4-22 ①
 REIL Rws 4, 13 and 22 ①