

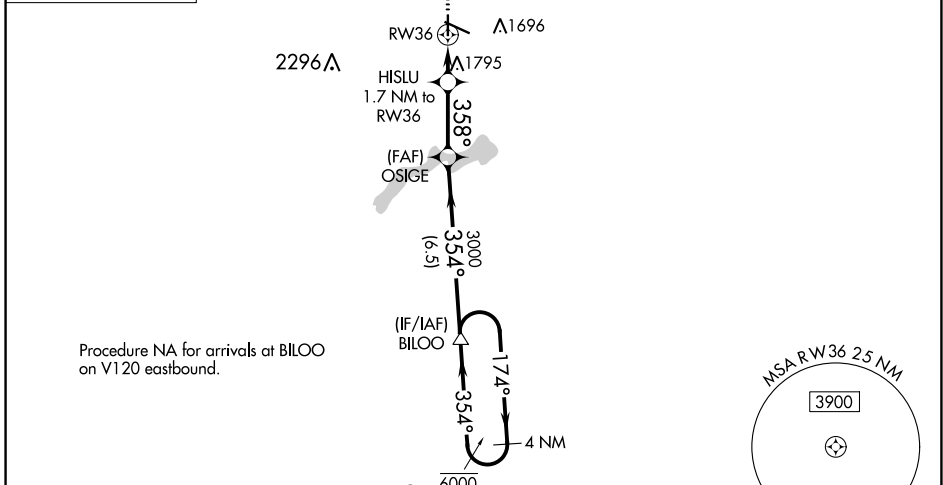
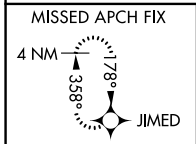
WAAS CH <b>99329</b> <b>W36A</b>	APP CRS <b>358°</b>	Rwy Idg TDZE Apt Elev	<b>4200</b> <b>1574</b> <b>1574</b>
--	------------------------	-----------------------------	---

# RNAV (GPS) RWY 36

WORTHINGTON MUNI (OTG)

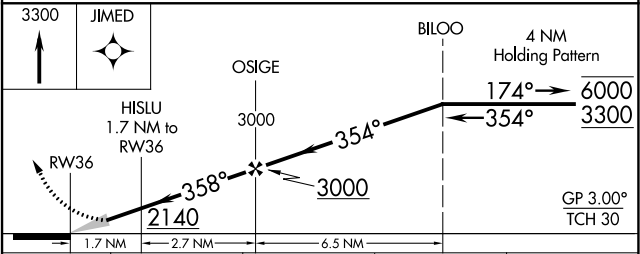
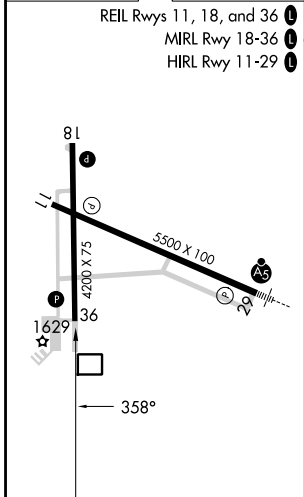
RNP APCH-GPS.	MISSED APPROACH: Climb to 3300 direct JIMED and hold.
<p>For uncompensated Baro-VNAV systems, LNAV/VNAV NA below -24°C or above 54°C.</p>	

AWOS-3PT <b>121.075</b>	MINNEAPOLIS CENTER <b>132.05 317.4</b>	UNICOM <b>122.8 (CTAF) 0</b>
----------------------------	---	---------------------------------



Procedure NA for arrivals at BILOO on V120 eastbound.

ELEV 1574	TDZE 1574
-----------	-----------



CATEGORY	A	B	C	D
LPV DA	1824-1 250 (300-1)			
LNAV/VNAV DA	2104-1½ 530 (600-1½)			
LNAV MDA	2060-1	486 (500-1)	2060-1¾	486 (500-1¾)
CIRCLING	2100-1	526 (600-1)	2100-1½ 526 (600-1½)	2320-2½ 746 (800-2½)

NC-1, 05 SEP 2024 to 03 OCT 2024

NC-1, 05 SEP 2024 to 03 OCT 2024