

(FOXHL1.FOXHL) 24193

AL-5212 (FAA)

MONTGOMERY COUNTY AIRPARK (GAI)

# FOXHL ONE DEPARTURE (RNAV)

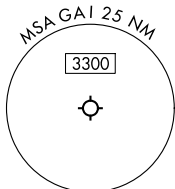
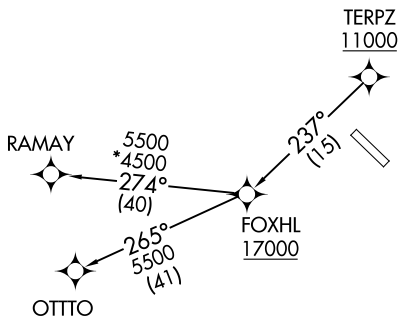
GAITHERSBURG, MARYLAND

POTOMAC DEP CON  
128.7 307.9  
AWOS-3PT  
128.275  
CLNC DEL  
121.6

RNAV 1 - DME/DME/IRU or GPS.

RADAR required.

**TOP ALTITUDE:**  
**17000**



NOTE: Jet aircraft only.

**TAKEOFF MINIMUMS:**  
Rwy 14, 32: Standard.

NOTE: Chart not to scale.



## DEPARTURE ROUTE DESCRIPTION

Climb on assigned heading for RADAR vectors to cross TERPZ at or above 11000, thence....

....then on track 237° to cross FOXHL at or above 17000, then on assigned transition. Maintain 17000, expect filed altitude 10 minutes after departure.

OTTO TRANSITION (FOXHL1.OTTO)

RAMAY TRANSITION (FOXHL1.RAMAY)

# FOXHL ONE DEPARTURE (RNAV)

(FOXHL1.FOXHL) 11JUL24

GAITHERSBURG, MARYLAND  
MONTGOMERY COUNTY AIRPARK (GAI)

NE-3, 05 SEP 2024 to 03 OCT 2024

NE-3, 05 SEP 2024 to 03 OCT 2024