

WAAS CH <b>82716</b> <b>W12A</b>	APP CRS <b>118°</b>	Rwy ldg TDZE Apt Elev	<b>6502</b> <b>918</b> <b>918</b>
--	------------------------	-----------------------------	---

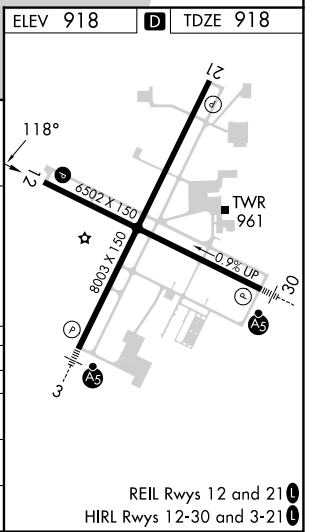
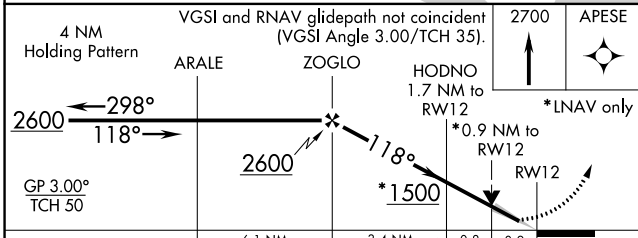
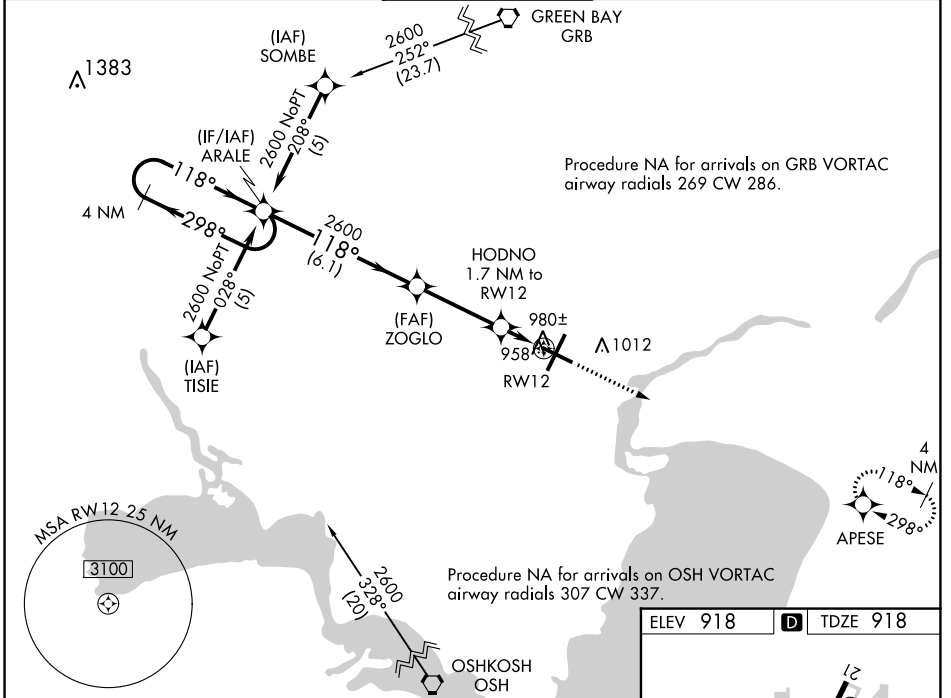
# RNAV (GPS) RWY 12

APPLETON INTL (ATW)

**⚠** For uncompensated Baro-VNAV systems, LNAV/VNAV NA below -16°C (4°F) or above 47°C (116°F). DME/DME RNP-0.3 NA. When local altimeter not received, use Green Bay-Austin Straubel Intl altimeter setting and increase all DA 81 feet and all MDA 100 feet. Increase LPV and LNAV/VNAV all Cats and LNAV Cat C/D visibility 1/2 mile. Baro-VNAV and VDP NA when using Green Bay-Austin Straubel altimeter setting.

**MISSED APPROACH:**  
Climb to 2700 direct APESE and hold.

ATIS <b>127.15</b>	GREEN BAY APP CON* <b>126.3 338.2</b>	APPLETON TOWER* <b>119.6 (CTAF) 0</b>	GND CON <b>121.7</b>	UNICOM <b>122.95</b>
-----------------------	--	--	-------------------------	-------------------------



CATEGORY	A	B	C	D
LPV DA		1118-3/4	200 (200-3/4)	
LNAV/VNAV DA		1329-1 1/2	411 (500-1 1/2)	
LNAV MDA		1240-1	322 (400-1)	
CIRCLING	1340-1 422 (500-1)	1380-1 462 (500-1)	1400-1 1/2 482 (500-1 1/2)	1480-2 562 (600-2)

EC-3, 05 SEP 2024 to 03 OCT 2024

EC-3, 05 SEP 2024 to 03 OCT 2024