

| | | | |
|--|------------------------|-----------------------------|---|
| WAAS CH 99638 W18A | APP CRS 184° | Rwy ldg TDZE Apt Elev | 5941 791 808 |
|--|------------------------|-----------------------------|---|

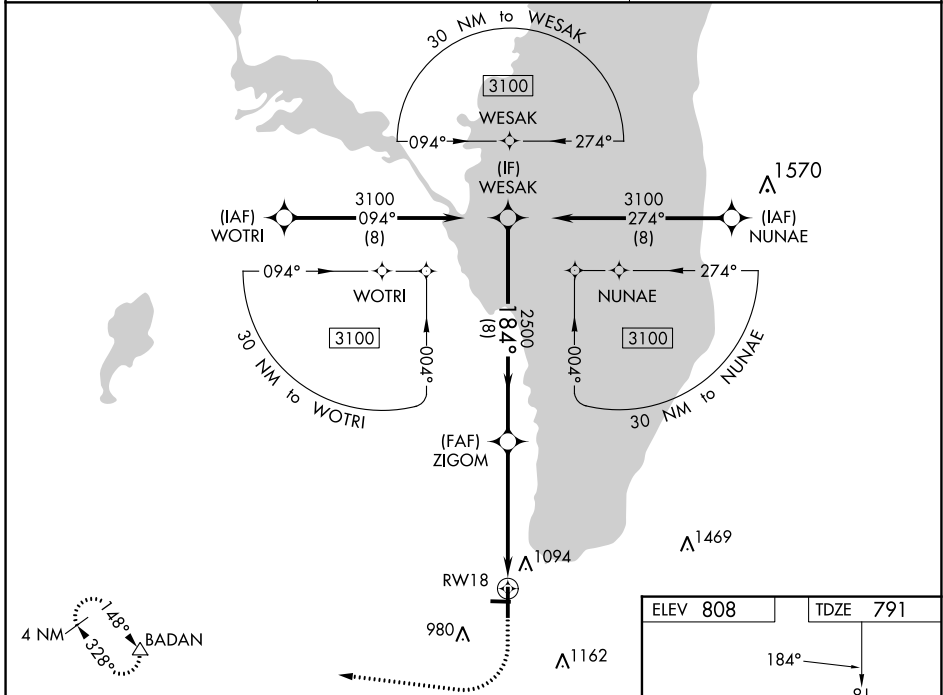
RNAV (GPS) RWY 18

FOND DU LAC COUNTY (F.L.D.)

⚠ Night landing: Rwy 9, 27 NA. Baro-VNAV NA when using Oshkosh altimeter setting. For uncompensated Baro-VNAV systems, LNAV/VNAV NA below -21°C (-5°F) or above 54°C (130°F). DME/DME RNP-0.3 NA. When local altimeter setting not received, use Oshkosh altimeter setting; increase LPV DA to 1072 feet and LNAV/VNAV DA to 1314 feet and all MDA 60 feet; increase LPV visibility all Cats, LNAV/VNAV visibility all Cats and LNAV Cat C/D visibility 1/8 mile; increase Circling Cat D visibility 1/4 mile.

MISSED APPROACH:
Climb to 1300 then climbing right turn 3000 direct BADAN and hold.

| | | |
|----------------------|---|----------------------------------|
| ASOS 134.0 | MILWAUKEE APP CON 127.0 263.075 | UNICOM 123.05 (CTAF) 0 |
|----------------------|---|----------------------------------|



EC-3, 05 SEP 2024 to 03 OCT 2024

EC-3, 05 SEP 2024 to 03 OCT 2024

VGSI and RNAV glidepath not coincident (VGSI Angle 3.00/TCH 35).

| | | | | |
|-------------------|--------------------|-------------|-----------------------|-------------------------------|
| | WESAK | ZIGOM | RWY 18 | BADAN |
| | 3100 | 2500 | 1300 | 3000 |
| | GP 3.00° TCH 45 | | *1.6 NM to RWY 18 | *LNAV only |
| CATEGORY | A | B | C | D |
| LPV DA | | 1041-7/8 | 250 (300-7/8) | |
| LNAV/VNAV DA | | 1283-13/4 | 492 (500-13/4) | |
| LNAV MDA | 1320-1 | 529 (600-1) | 1320-1 1/2 | 529 (600-1 1/2) |
| C CIRCLING | 1400-1 | 592 (600-1) | 1520-2 712 (800-2) | 1520-2 1/4 712 (800-2 1/4) |

