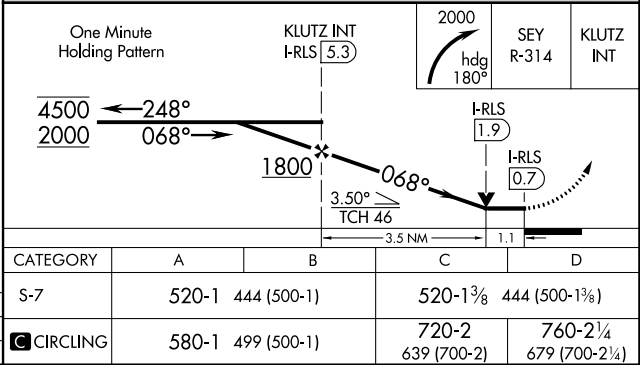
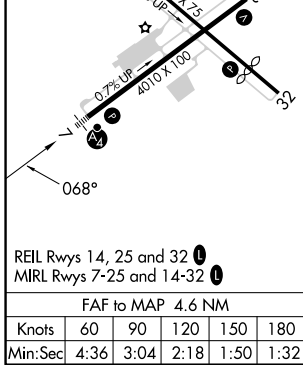
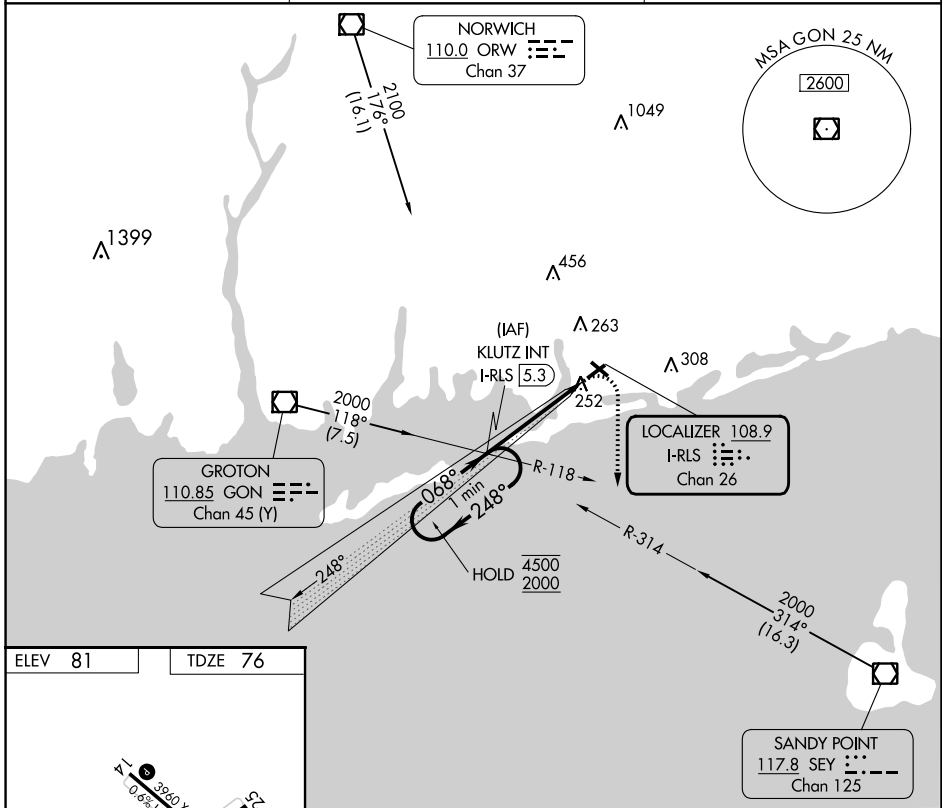


LOC/DME I-RLS 108.9 Chan 26	APP CRS 068°	Rwy Idg TDZE Apt Elev	4010 76 81
--	------------------------	-----------------------------	---------------------------------------

LOC RWY 7
WESTERLY STATE (WST)

<p>NA</p> <p>⚠ Circling to Rwy 14 and 32 NA at night. Rwy 7 helicopter visibility reduction below 3/4 SM NA. Inop table does not apply.</p>	<p>MALSF</p>	<p>MISSED APPROACH: Climbing right turn to 2000 on heading 180° and SEY R-314 to KLUTZ INT/I-RLS 5.3 DME and hold, continue climb-in-hold to 2000.</p>
--	---------------------	---

<p>ASOS 132.375</p>	<p>PROVIDENCE APP CON ★ 119.45 319.2</p>	<p>UNICOM 123.0 (CTAF) 0</p>
--------------------------------	---	---



NE-1, 05 SEP 2024 to 03 OCT 2024

NE-1, 05 SEP 2024 to 03 OCT 2024