

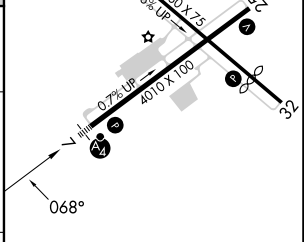
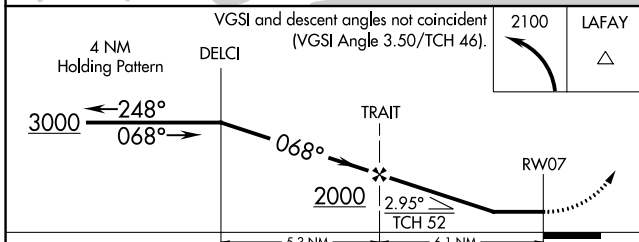
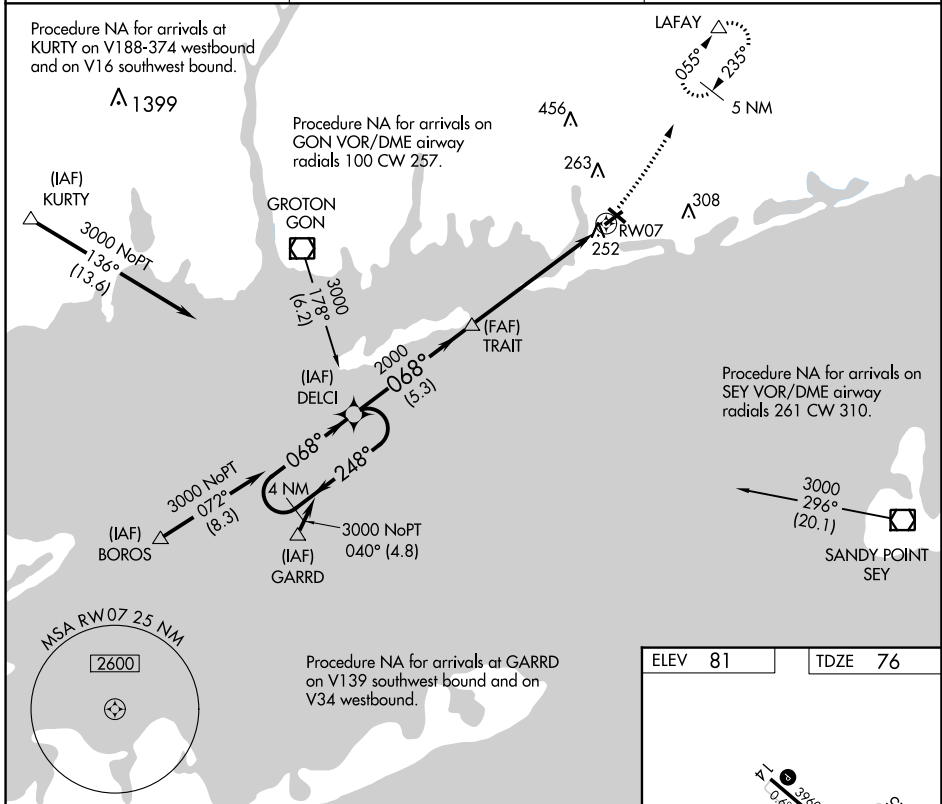
APP CRS 068°	Rwy Idg TDZE Apt Elev	4010 76 81
------------------------	-----------------------------	---------------------------------------

RNAV (GPS) RWY 7

WESTERLY STATE (WST)

▼ Inoperative table does not apply. DME/DME RNP-0.3 NA. ▲ NA	MALSF	MISSED APPROACH: Climbing left turn to 2100 direct LAFAY and hold.
---	--------------	--

ASOS 132.375	PROVIDENCE APP CON ★ 119.45 319.2	UNICOM 123.0 (CTAF) 0
------------------------	---	---------------------------------



CATEGORY	A	B	C	D
RNAV MDA	520-1 444 (500-1)	520-1¼ 444 (500-1¼)	520-1½ 444 (500-1½)	520-1½ 444 (500-1½)
CIRCLING	580-1 499 (500-1)	720-1¾ 639 (700-1¾)	760-2¼ 679 (700-2¼)	760-2¼ 679 (700-2¼)

REIL Rwy 14, 25 and 32
MIRL Rwy 7-25 and 14-32

NE-1, 05 SEP 2024 to 03 OCT 2024

NE-1, 05 SEP 2024 to 03 OCT 2024