

APP CRS	Rwy Idg	<b>5756</b>
<b>164°</b>	TDZE	<b>1327</b>
	Apt Elev	<b>1356</b>

# RNAV (GPS) RWY 16

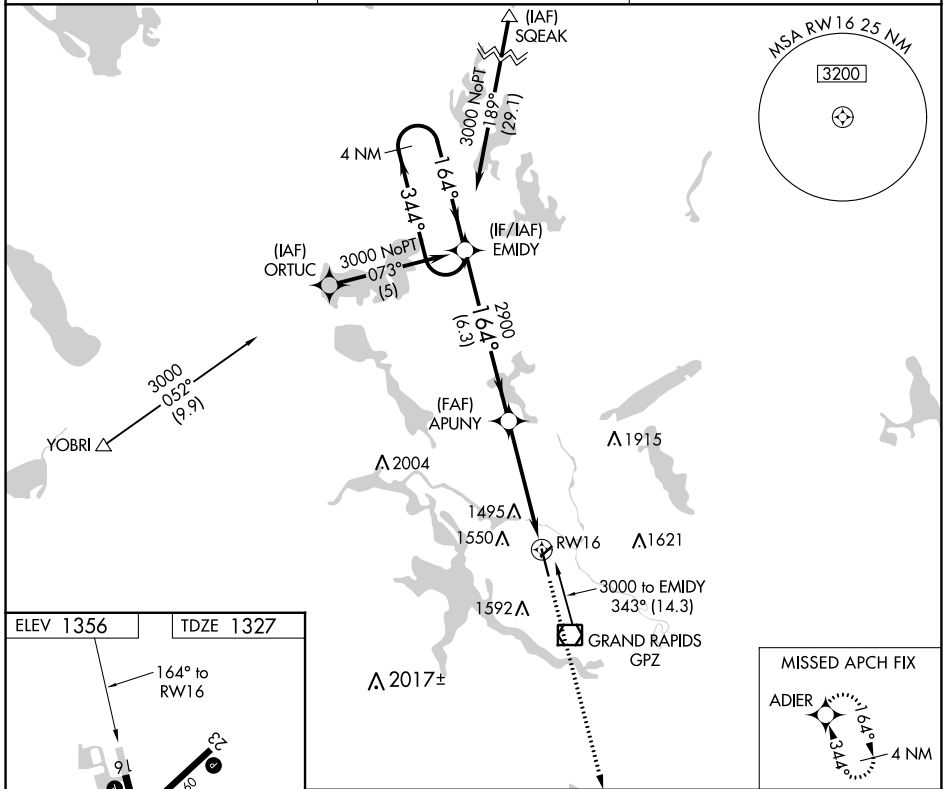
GRAND RAPIDS/ITASCA COUNTY-GORDON NEWSTROM FLD (GPZ)

RNP APCH.

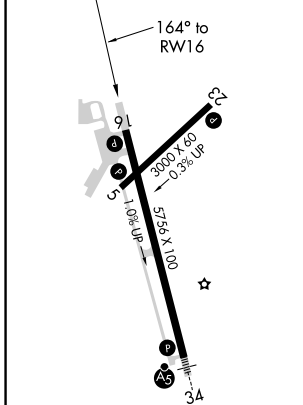
**⚠** Circling Rwy 5 NA at night. Circling NA for Cat D east of Rwy 16-34. When local altimeter setting not received, use Hibbing altimeter setting and increase all MDAs 80 feet; increase LNAV Cat C visibility 1/8 SM and Circling Cats C/D visibility 1/4 SM.

MISSED APPROACH: Climb to 2900 direct ADIER and hold.

AWOS-3PT <b>118.425</b>	MINNEAPOLIS CENTER <b>127.9 281.45</b>	UNICOM <b>122.8 (CTAF)</b>
----------------------------	---	-------------------------------



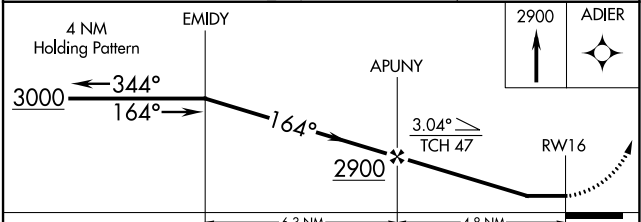
ELEV 1356	TDZE 1327
-----------	-----------



MIRL Rwy 5-23 **⚠**

HIRL Rwy 16-34 **⚠**

REIL Rws 5, 16, and 23 **⚠**



CATEGORY	A	B	C	D
LNAV MDA	1760-1	433 (500-1)	1760-1 1/4 433 (500-1 1/4)	1760-1 1/2 433 (500-1 1/2)
<b>C</b> CIRCLING	1900-1	544 (600-1)	1900-1 1/2 544 (600-1 1/2)	2000-2 644 (700-2)

NC-1, 05 SEP 2024 to 03 OCT 2024

NC-1, 05 SEP 2024 to 03 OCT 2024