


VOR/DME GPZ <b>111.4</b> Chan <b>51</b>	APP CRS <b>334°</b>	Rwy Idg <b>5756</b> TDZE <b>1356</b> Apt Elev <b>1356</b>
---	------------------------	---

# VOR RWY 34

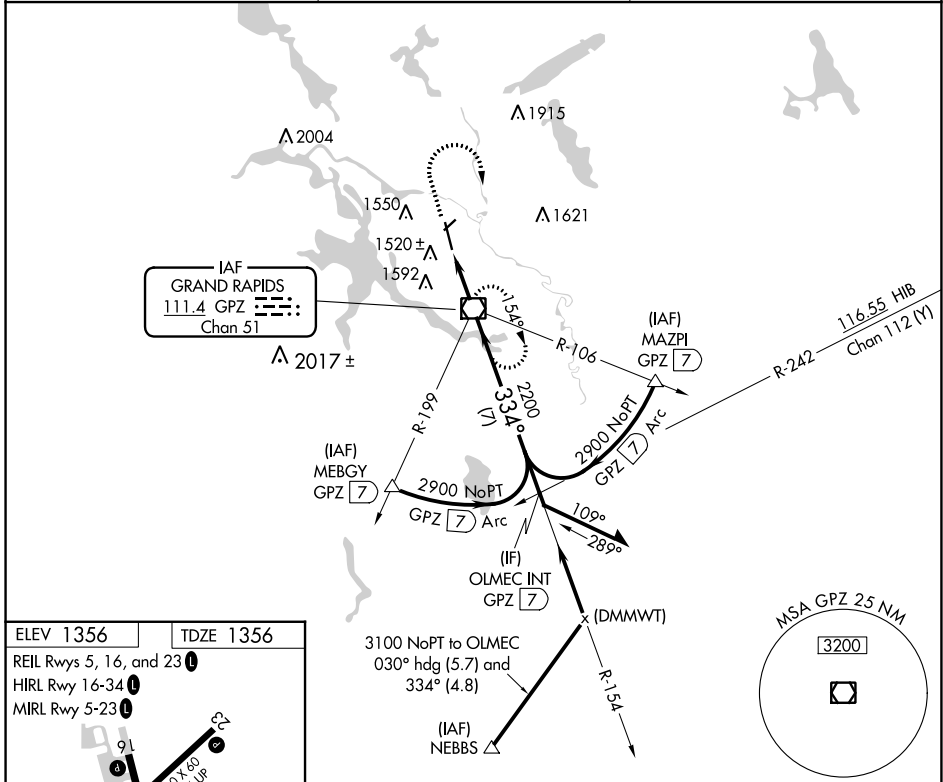
GRAND RAPIDS/ITASCA COUNTY-GORDON NEWSTROM FLD (GPZ)

**⚠** VDP NA when using Hibbing's altimeter setting. Circling Rwy 5 NA at night. Circling NA for Cat D east of Rwy 16-34. When local altimeter setting not received, use Hibbing altimeter setting and increase all MDAs 80 feet, increase S-34 Cat C visibility 1/8 SM and Circling Cats C/D visibility 1/4 SM.


**MALSR** 


**MISSED APPROACH:** Climb to 3100 then right turn direct GPZ VOR/DME and hold.


AWOS-3PT <b>118.425</b>	MINNEAPOLIS CENTER <b>127.9 281.45</b>	UNICOM <b>122.8 (CTAF) 0</b>
----------------------------	---	---------------------------------

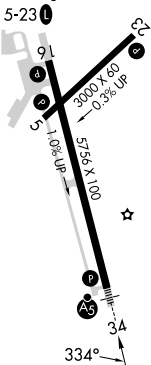


ELEV 1356 TDZE 1356

REIL Rws 5, 16, and 23 

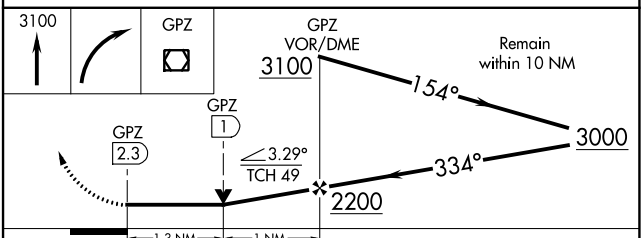
HIRL Rwy 16-34 


MIRL Rwy 5-23 



FAF to MAP 2.3 NM

Knots	60	90	120	150	180
Min:Sec	2:18	1:32	1:09	0:55	0:46



CATEGORY	A	B	C	D
S-34	1800-1/2 444 (500-1/2)		1800-7/8 444 (500-7/8)	1800-1 444 (500-1)
 CIRCLING	1900-1 544 (600-1)		1900-1/2 544 (600-1/2)	2000-2 644 (700-2)

NC-1, 05 SEP 2024 to 03 OCT 2024

NC-1, 05 SEP 2024 to 03 OCT 2024