

WAAS CH <b>78422</b> <b>W34A</b>	APP CRS <b>344°</b>	Rwy Idg <b>4125</b> TDZE <b>138</b> Apt Elev <b>141</b>
--	------------------------	---

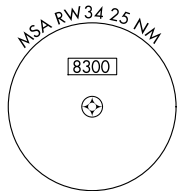
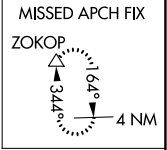
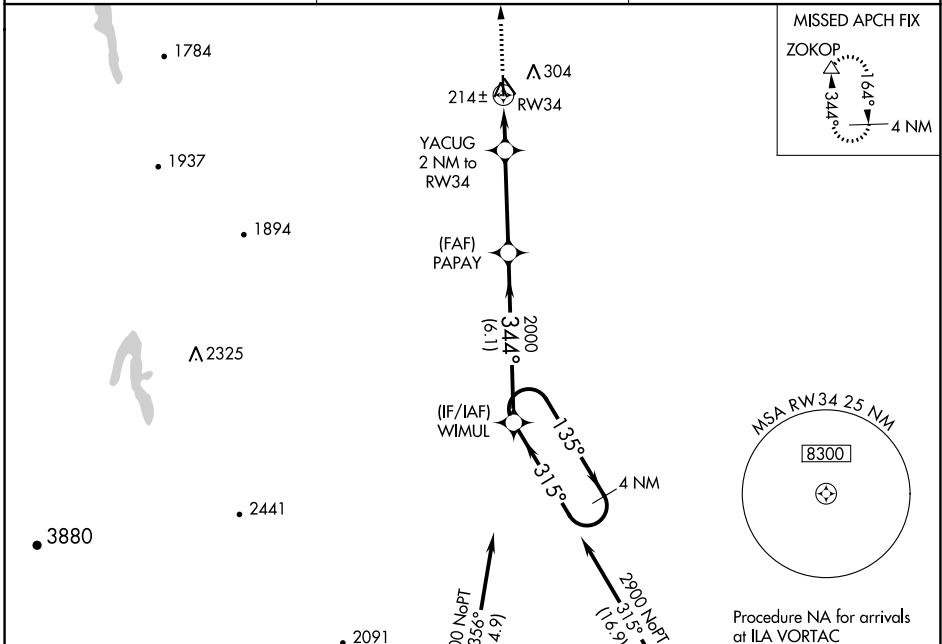
# RNAV (GPS) RWY 34

WILLOWS/GLENN COUNTY (WLW)

**NA** When Oroville Muni altimeter setting not received, procedure NA.  
Baro-VNAV NA. DME/DME RNP-0.3 NA. Use Oroville altimeter setting.

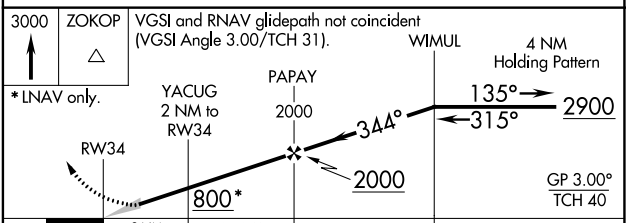
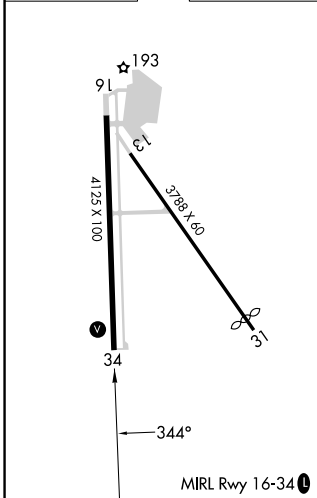
MISSED APPROACH: Climb to 3000 direct ZOKOP and hold.

OVE ASOS <b>121.425</b>	OAKLAND CENTER <b>132.2 350.3</b>	UNICOM <b>122.8 (CTAF)</b>
----------------------------	--------------------------------------	-------------------------------



Procedure NA for arrivals at ILA VORTAC on V195 southbound.

ELEV 141	TDZE 138
----------	----------



CATEGORY	A	B	C	D
LPV DA	460-1 1/8	322 (400-1 1/8)		NA
LNAV/VNAV DA	460-1 1/8	322 (400-1 1/8)		NA
LNAV MDA	540-1	402 (400-1)	540-1 1/8 402 (400-1 1/8)	NA
<b>C</b> CIRCLING	680-1	539 (600-1)	680-1 1/2 539 (600-1 1/2)	NA

SW-2, 05 SEP 2024 to 03 OCT 2024

SW-2, 05 SEP 2024 to 03 OCT 2024