

APP CRS	Rwy Idg	5197
235°	TDZE	2671
	Apt Elev	2671

RNAV (GPS) RWY 22

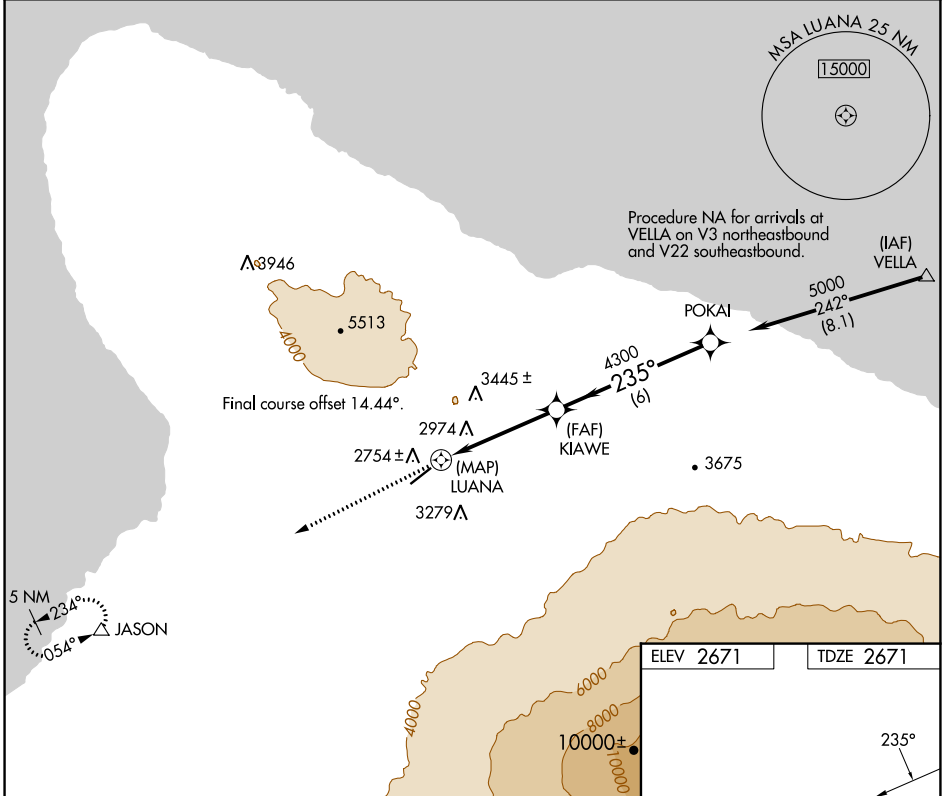
WAIMEA-KOHALA (MUE)(PHMU)

RNP APCH

NA Circling NA NW of Rwy 4-22. Rwy 22 helicopter visibility reduction below 1 SM NA. When local altimeter setting not received procedure NA.

MISSED APPROACH: Climb to 5000 direct JASON and hold.

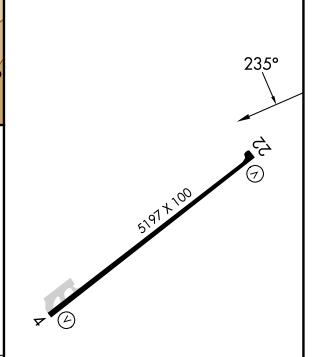
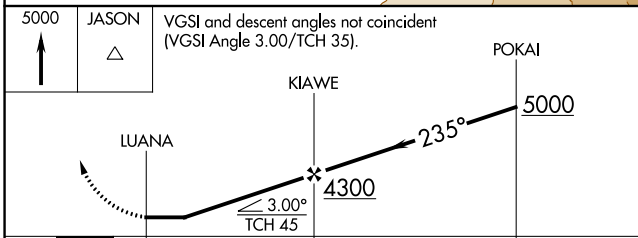
AWOS-3PT 120.0	HCF CENTER 118.45 278.3	CTAF 122.9 0
--------------------------	-----------------------------------	------------------------



PAC, 05 SEP 2024 to 31 OCT 2024

PAC, 05 SEP 2024 to 31 OCT 2024

ELEV 2671	TDZE 2671
-----------	-----------



CATEGORY	A	B	C	D
LNVA MDA	3660-1¼ 989 (1000-1¼)	3660-1½ 989 (1000-1½)	3660-3	989 (1000-3)
CIRCLING	3660-1¼ 989 (1000-1¼)	3660-1½ 989 (1000-1½)	3660-3 989 (1000-3)	3940-3 1269 (1300-3)

MIRL Rwy 4-22 **0**
REIL Rws 4 and 22