

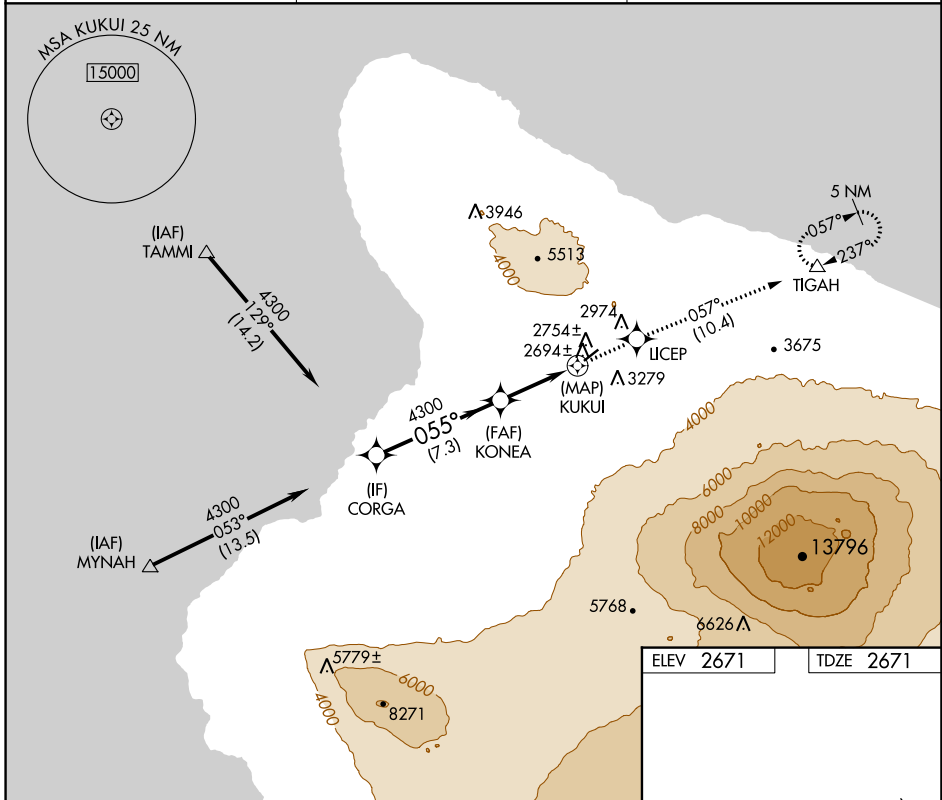
APP CRS	Rwy Idg	5197
055°	TDZE	2671
	Apt Elev	2671

RNAV (GPS) RWY 4

WAIMEA-KOHALA (MUE)(PHMU)

<p>▽ Circling NA northwest of Rwy 4-22.</p> <p>△ NA When local altimeter setting not received, procedure NA. DME/DME RNP-0.3 NA.</p>	<p>MISSED APPROACH: Climb to 5000 direct LI CEP and on track 057° to TIGAH and hold.</p>
--	--

AWOS-3PT 120.0	HCF CENTER 118.45 278.3	CTAF 122.9 0
--------------------------	-----------------------------------	------------------------



PAC, 05 SEP 2024 to 31 OCT 2024

PAC, 05 SEP 2024 to 31 OCT 2024

<p>VGSI and descent angles not coincident (VGSI Angle 2.50/TCH 43).</p>		<p>5000</p>	<p>LI CEP</p>	<p>tr 057°</p>	<p>TIGAH</p>
<p>CORGA</p>		<p>KONEA</p>		<p>KUKUI</p>	
<p>4300 — 055° — 4300</p>		<p>1.5 NM to KUKUI</p>		<p>3.00° TCH 45</p>	
<p>7.3 NM</p>		<p>3 NM</p>		<p>1.5 0.5</p>	
CATEGORY	A	B	C	D	
RNAV MDA	3220-1	549 (600-1)	3220-1½	549 (600-1½)	
CIRCLING	3520-1¼	849 (900-1¼)	3580-2¾ 909 (1000-2¾)	3940-3 1269 (1300-3)	<p>MIRL Rwy 4-22 0</p> <p>REIL Rws 4 and 22</p>