

VOR/DME MUE 113.3 Chan 80	APP CRS 237°	Rwy Idg TDZE Apt Elev	N/A N/A 2671
---	------------------------	-----------------------------	---

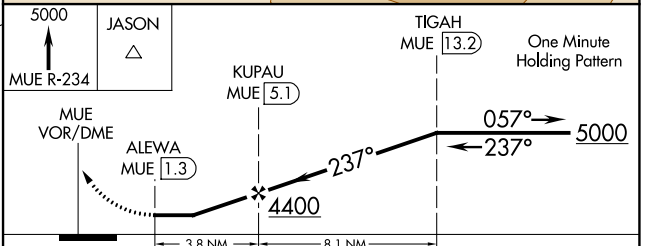
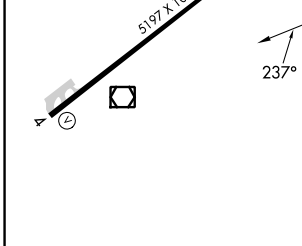
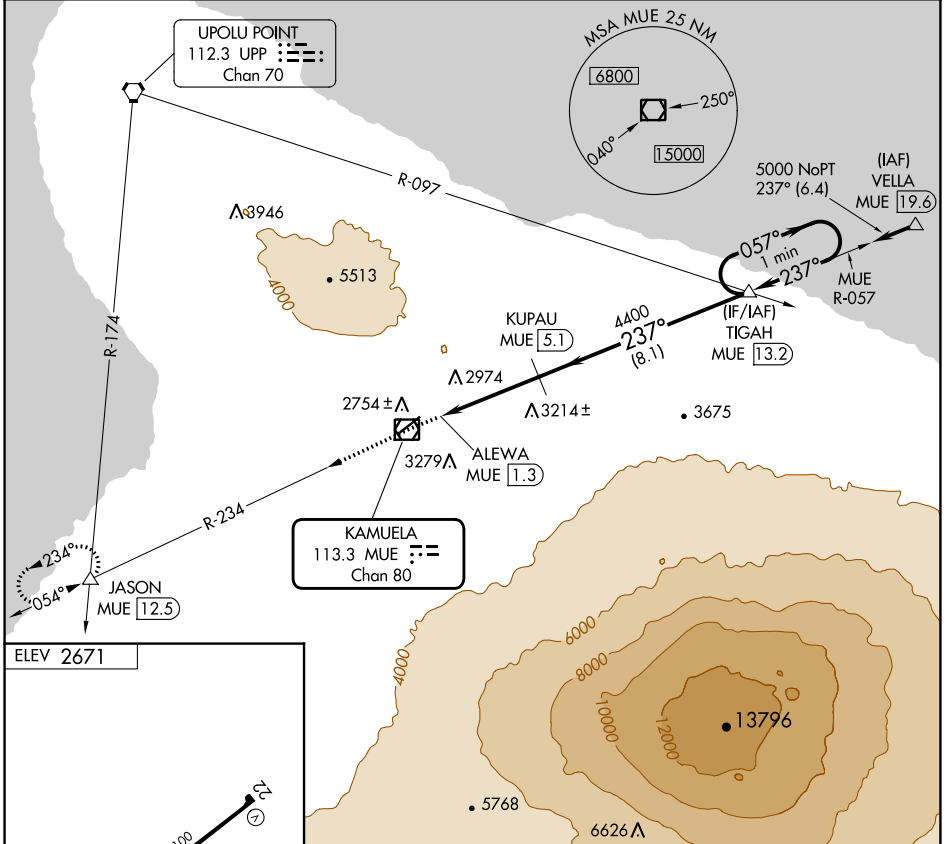
VOR/DME-A

WAIMEA-KOHALA (MUE)(PHMU)

NA When local altimeter not received, procedure NA. Circling NA northwest of Rwy 4-22.

MISSED APPROACH: Climb to 5000 via MUE R-234 to JASON INT/12.5 DME and hold.

AWOS-3PT 120.0	HCF CENTER 118.45 278.3	CTAF 122.9
--------------------------	-----------------------------------	----------------------



MIRL Rwy 4-22 REIL Rwy 4 and 22				
CATEGORY	A	B	C	D
CIRCLING	3680-1¼ 1009 (1100-1¼)	3680-1½ 1009 (1100-1½)	3680-3 1009 (1100-3)	3940-3 1269 (1300-3)

PAC: 05 SEP 2024 to 31 OCT 2024

PAC: 05 SEP 2024 to 31 OCT 2024