

WAAS CH 72828 W02A	APP CRS 018°	Rwy Idg TDZE Apt Elev	5000 1151 1165
--	------------------------	-----------------------------	---

RNAV (GPS) RWY 2

ATLANTIC MUNI (AIO)

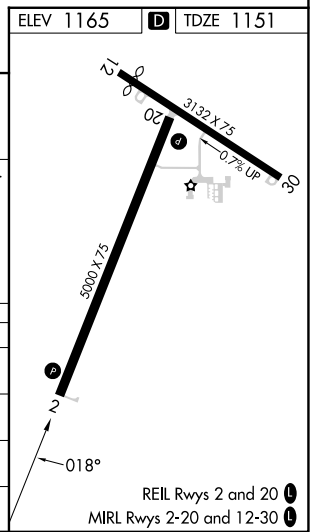
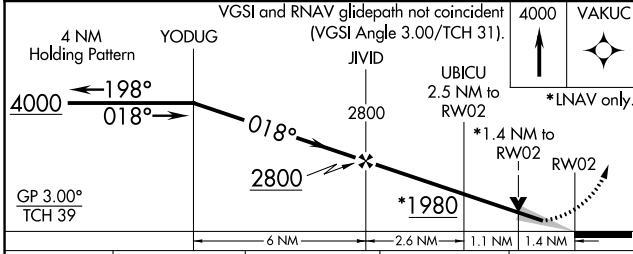
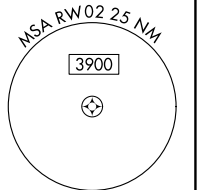
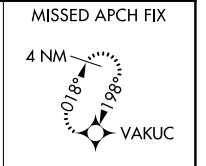
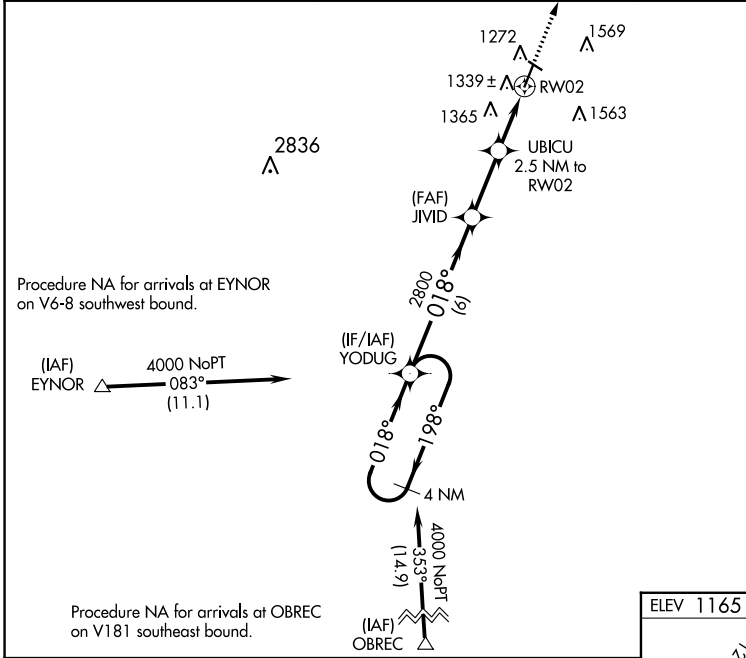
⚠ DME/DME RNP -0.3 NA. Baro-VNAV and VDP NA when using Harlan altimeter setting. For uncompensated Baro-VNAV systems, LNAV/VNAV NA below -17°C (2°F) or above 54°C (130°F). When local altimeter setting not received, use Harlan altimeter setting: increase LPV DA to 1450 feet and all visibilities ½ SM; increase LNAV/VNAV DA to 1563 feet and all visibilities ½ SM; increase all MDAs 60 feet, and LNAV visibility Cat C ½ SM and Circling visibility Cat B/C ¼ SM. Circling Rwy 12, 30 NA at night.

MISSED APPROACH:
Climb to 4000 direct VAKUC and hold.

AWOS-3
127.825

MINNEAPOLIS CENTER
119.6 290.4

UNICOM
122.7 (CTAF)



CATEGORY	A	B	C	D
LPV DA	1401-7/8	250 (300-7/8)		NA
LNAV/VNAV DA	1514-1/4	363 (400-1/4)		NA
LNAV MDA	1620-1	469 (500-1)	1620-1 3/8 469 (500-1 3/8)	NA
CIRCLING	1760-1 595 (600-1)	1920-1 755 (800-1)	1920-2 1/4 755 (800-2 1/4)	NA

NC-3, 05 SEP 2024 to 03 OCT 2024

NC-3, 05 SEP 2024 to 03 OCT 2024