

# PLESS FIVE DEPARTURE

AL-5316 (FAA)

ST LOUIS DOWNTOWN (CPS)  
CAHOKIA/ST. LOUIS, ILLINOIS

EC-3, 05 SEP 2024 to 03 OCT 2024

**TOP ALTITUDE:  
ASSIGNED BY ATC**

ST. LOUIS  
117.4 STL  
Chan 121

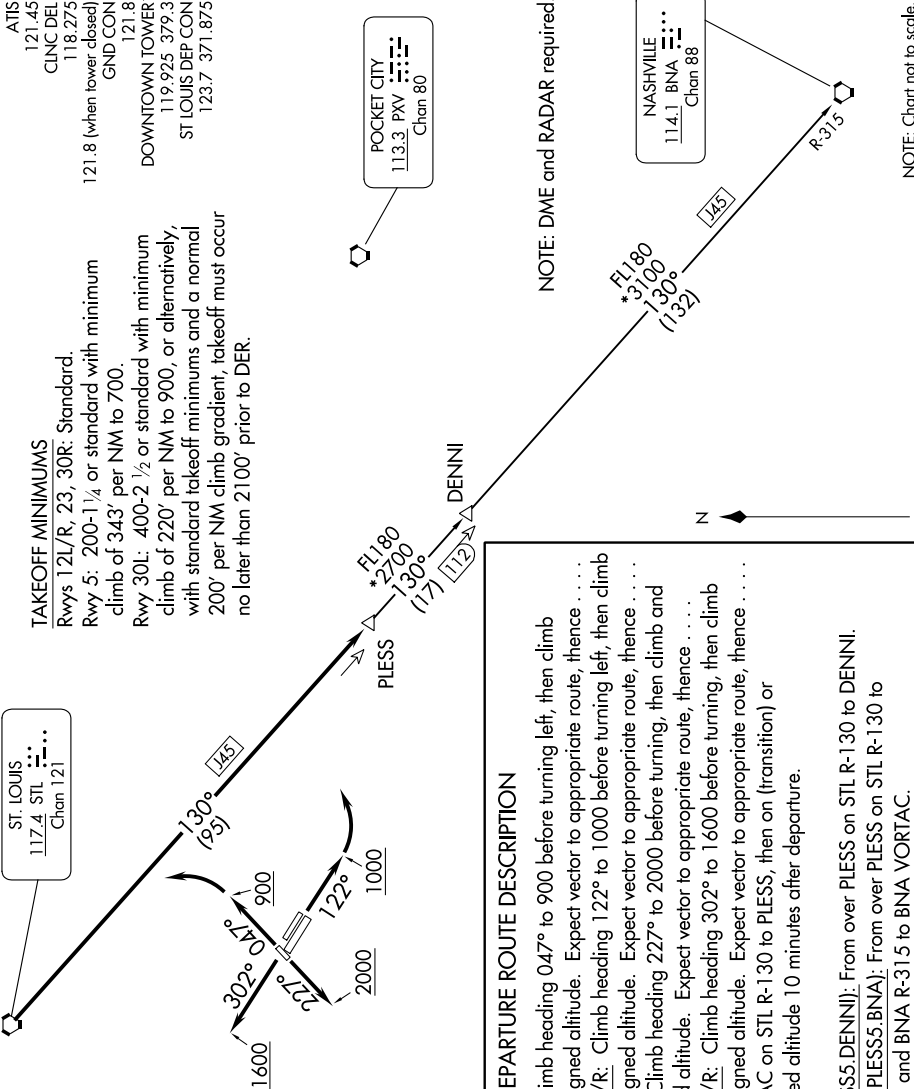
### TAKEOFF MINIMUMS

Rwys 12L/R, 23, 30R: Standard.  
Rwy 5: 200-1/4 or standard with minimum climb of 343' per NM to 700.  
Rwy 30L: 400-2 1/2 or standard with minimum climb of 220' per NM to 900, or alternatively, with standard takeoff minimums and a normal 200' per NM climb gradient; takeoff must occur no later than 2100' prior to DER.

ATIS 121.45  
CUNC DEL 118.275  
121.8 (when tower closed)  
GND CON 121.8  
DOWNTOWN TOWER\* 119.925, 379.3  
ST LOUIS DEP CON 123.7, 371.875

POCKET CITY  
113.3 PXV  
Chan 80

NASHVILLE  
114.1 BNA  
Chan 88



### DEPARTURE ROUTE DESCRIPTION

**TAKEOFF RUNWAY 5:** Climb heading 047° to 900 before turning left, then climb and maintain 2500 or assigned altitude. Expect vector to appropriate route, thence . . . .

**TAKEOFF RUNWAYS 12L/R:** Climb heading 122° to 1000 before turning left, then climb and maintain 2500 or assigned altitude. Expect vector to appropriate route, thence . . . .

**TAKEOFF RUNWAY 23:** Climb heading 227° to 2000 before turning, then climb and maintain 2500 or assigned altitude. Expect vector to appropriate route, thence . . . .

**TAKEOFF RUNWAYS 30L/R:** Climb heading 302° to 1600 before turning, then climb and maintain 2500 or assigned altitude. Expect vector to appropriate route, thence . . . .  
. . . . from over STL VORTAC on STL R-130 to PLESS, then on (transition) or (assigned route). Expect filed altitude 10 minutes after departure.

**DENNI TRANSITION (PLESS5.DENNI):** From over PLESS on STL R-130 to DENNI.

**NASHVILLE TRANSITION (PLESS5.BNA):** From over PLESS on STL R-130 to DENNI, then on STL R-130 and BNA R-315 to BNA VORTAC.

NOTE: Chart not to scale.

EC-3, 05 SEP 2024 to 03 OCT 2024

# PLESS FIVE DEPARTURE