

WAAS CH <b>70521</b> <b>W30A</b>	APP CRS <b>302°</b>	Rwy Idg TDZE Apt Elev	<b>7002</b> <b>411</b> <b>413</b>
--	------------------------	-----------------------------	---

# RNAV (GPS) RWY 30L

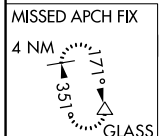
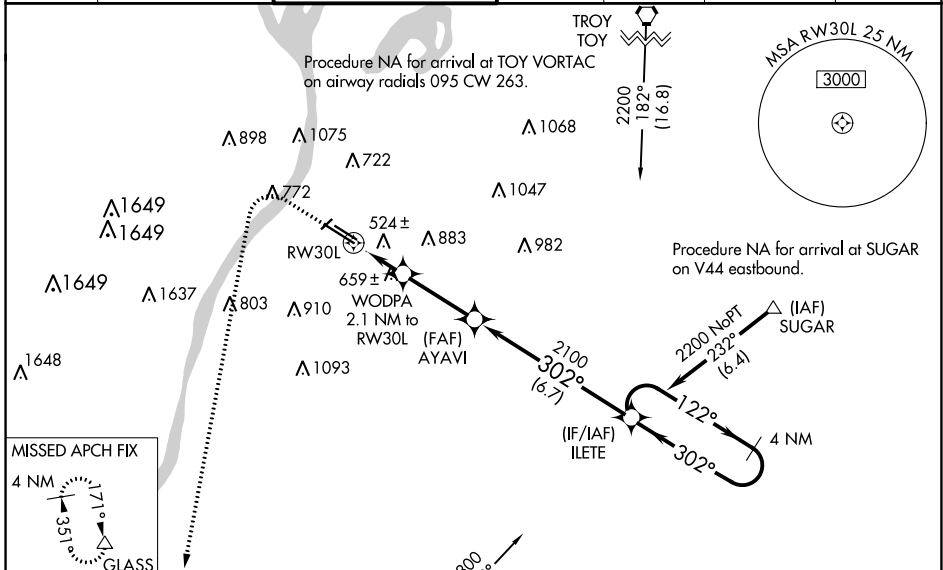
ST LOUIS DOWNTOWN (CPS)

**⚠** DME/DME RNP-0.3 NA. When local altimeter setting not received, use St Louis Lambert Intl altimeter setting and increase LPV DA to 674 feet, LNAV/VNAV DA to 890 feet, and all MDA 80 feet; increase LNAV/VNAV all Cats visibility  $\frac{1}{4}$  SM, LNAV Cats C/D visibility  $\frac{3}{8}$  SM, and Circling Cat C visibility  $\frac{1}{4}$  SM. VDP and Baro-VNAV NA with St Louis Lambert Intl altimeter setting. For uncompensated Baro-VNAV systems, LNAV/VNAV NA below -1.5°C (5°F) or above 41°C (105°F). When using St Louis Lambert Intl altimeter setting; for inop MALS, increase LPV all Cats visibility to  $\frac{3}{8}$  mile and LNAV Cats C/D visibility to  $1\frac{3}{8}$  mile. Night landing: Rwy 5 NA.

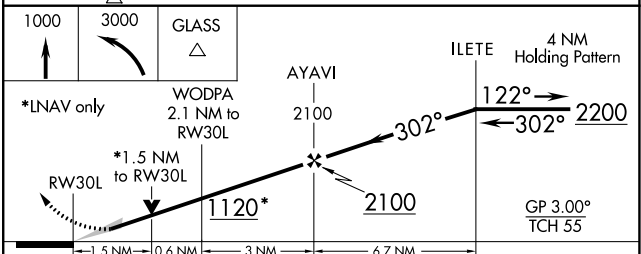
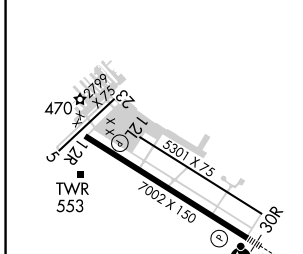
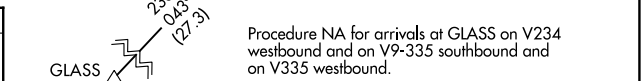


**MISSED APPROACH:**  
Climb to 1000 then climbing left turn to 3000 direct GLASS and hold.

ATIS <b>121.45</b>	ST LOUIS APP CON <b>123.7 371.875</b>	<b>DOWNTOWN TOWER *</b> <b>119.925 (CTAF) 0 379.3</b>	GND CON <b>121.8</b>	CLNC DEL <b>118.275</b>	CLNC DEL <b>121.8</b> (When twr closed)	UNICOM <b>122.95</b>
-----------------------	--	--	-------------------------	----------------------------	---	-------------------------



ELEV 413	<b>D</b>	TDZE 411
----------	----------	----------



CATEGORY	A	B	C	D
LPV DA		611- $\frac{1}{2}$	200 (200- $\frac{1}{2}$ )	
LNAV/VNAV DA		827- $\frac{7}{8}$	416 (500- $\frac{7}{8}$ )	
LNAV MDA	940- $\frac{1}{2}$	529 (600- $\frac{1}{2}$ )	940-1	529 (600-1)
CIRCLING	940-1 527 (600-1)	1120-1 707 (800-1)	1240-2 $\frac{1}{2}$ 827 (900-2 $\frac{1}{2}$ )	1380-3 967 (1000-3)

HIRL Rwy 12R-30L  
REIL Rwy 12L and 12R  
REIL Rwy 30R  
MIRL Rwy 5-23 and 12L-30R

EC-3, 05 SEP 2024 to 03 OCT 2024

EC-3, 05 SEP 2024 to 03 OCT 2024