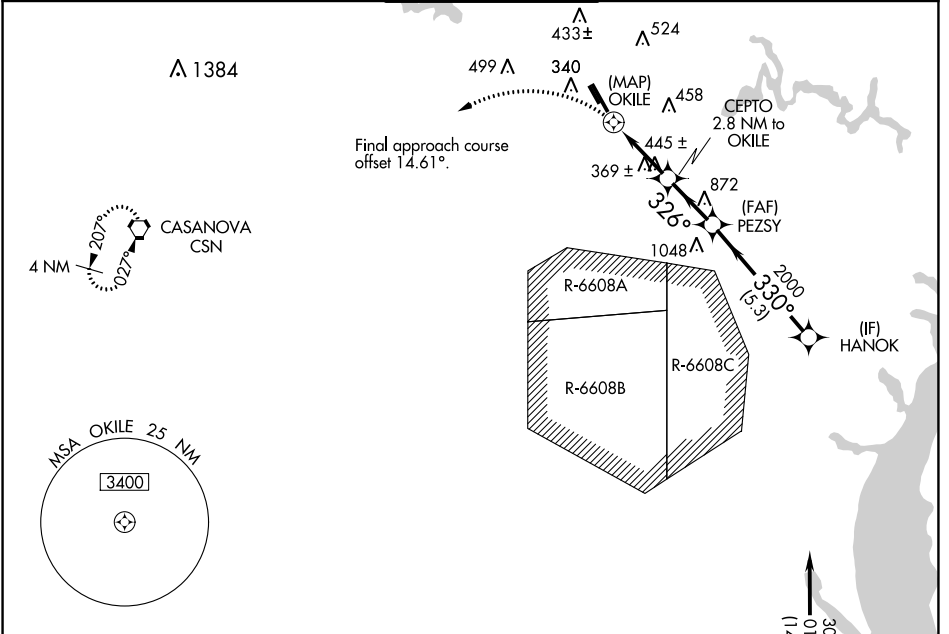


WAAS CH <b>63130</b> <b>W34A</b>	APP CRS <b>326°</b>	Rwy Idg TDZE Apt Elev	<b>6200</b> <b>178</b> <b>192</b>
--	------------------------	-----------------------------	---

# RNAV (GPS) RWY 34R

MANASSAS RGNL/HARRY P DAVIS FLD (HEF)

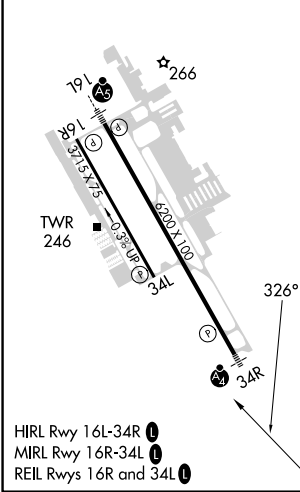
RNP APCH.		MALSF	MISSED APPROACH: Climbing left turn to 3000 direct CSN VORTAC and hold.	
<p>▼ Rwy 34R helicopter visibility reduction below 3/4 SM NA. For inop ALS, increase LP and LNAV Cats C/D visibility to 1 3/8 SM.</p>				
ATIS <b>125.175</b>	POTOMAC APP CON <b>128.525 306.925</b>	MANASSAS TOWER ★ <b>133.1 (CTAF) 360.75</b>	GND CON <b>121.8</b>	CLNC DEL <b>120.2</b>



NE-3, 05 SEP 2024 to 03 OCT 2024

NE-3, 05 SEP 2024 to 03 OCT 2024

ELEV 192	TDZE 178
----------	----------



3000	CSN	HANOK				
3000	OKILE	CEPTO 2.8 NM to OKILE	PEZSY	330°	3000	
	OKILE	1 NM to OKILE	326°	2000		
		1260	3.00° TCH 40			
		0.5	1 NM	1.8 NM	2.3 NM	5.3 NM
CATEGORY	A	B	C	D		
LP MDA	620-1 442 (500-1)					
LNAV MDA	640-1	462 (500-1)	640-1 1/8	462 (500-1 1/8)		
CIRCLING	700-1	740-1	840-1 3/4	920-2 1/4		
	508 (600-1)	548 (600-1)	648 (700-1 1/4)	728 (800-2 1/4)		