

| | | |
|------------------------|-----------------------------|---|
| APP CRS 023° | Rwy Idg TDZE Apt Elev | N/A N/A 1040 |
|------------------------|-----------------------------|---|

RNAV (GPS)-B

JAFFREY AIRFIELD SILVER RANCH (A1N)

RNP APCH-GPS.

▼ When local altimeter setting not received, use Keene altimeter setting and increase all MDA 120 feet and all Cats visibility 1/4 mile. Procedure NA at night.

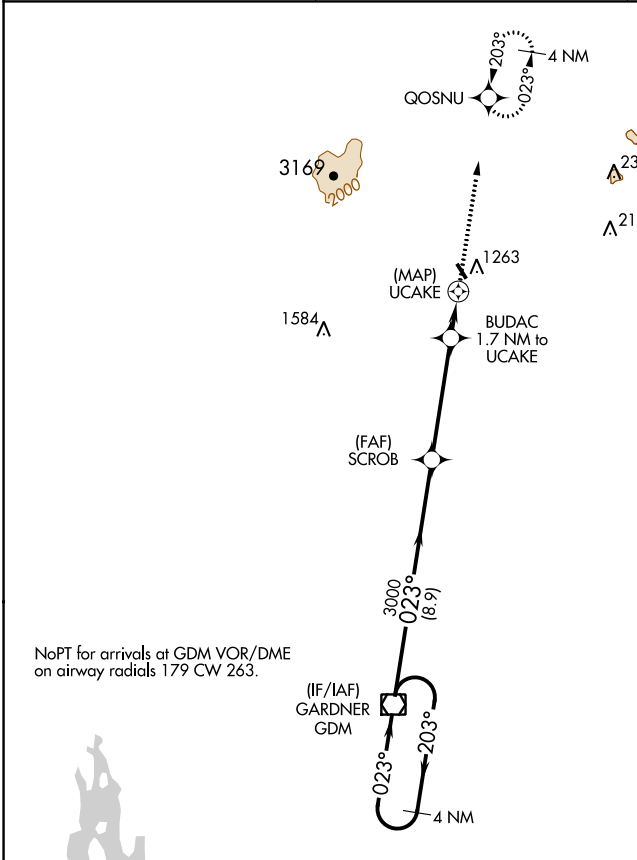
▲ Rwy 16 and 34 helicopter visibility reduction below 1 SM NA.

MISSED APPROACH: Climb to 3400 direct QOSNU and hold.

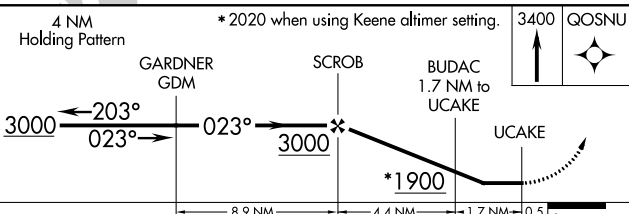
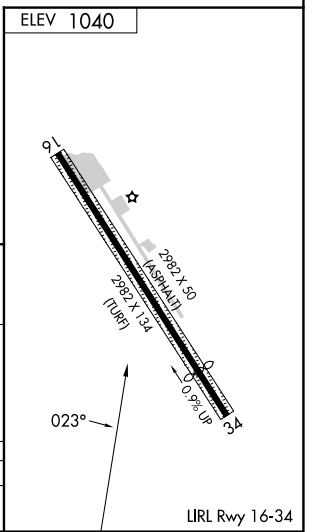
ASOS
135.875

BOSTON CENTER
123.75 338.2

UNICOM
122.8 (CTAF)



NoPT for arrivals at GDM VOR/DME on airway radials 179 CW 263.



| | | | | |
|----------|-----------------------|-----------------------|----|---|
| CATEGORY | A | B | C | D |
| CIRCLING | 1760-1 720 (800-1) | 1820-1 780 (800-1) | NA | |

NE-1, 05 SEP 2024 to 03 OCT 2024

NE-1, 05 SEP 2024 to 03 OCT 2024