

WAAS CH <b>40030</b> <b>W26A</b>	APP CRS <b>256°</b>	Rwy Idg <b>2810</b> TDZE <b>523</b> Apt Elev <b>523</b>
--	------------------------	---

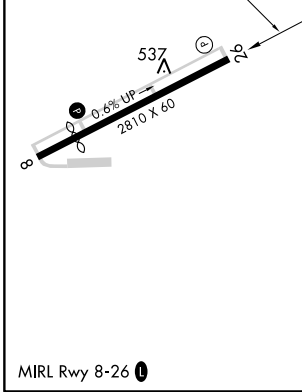
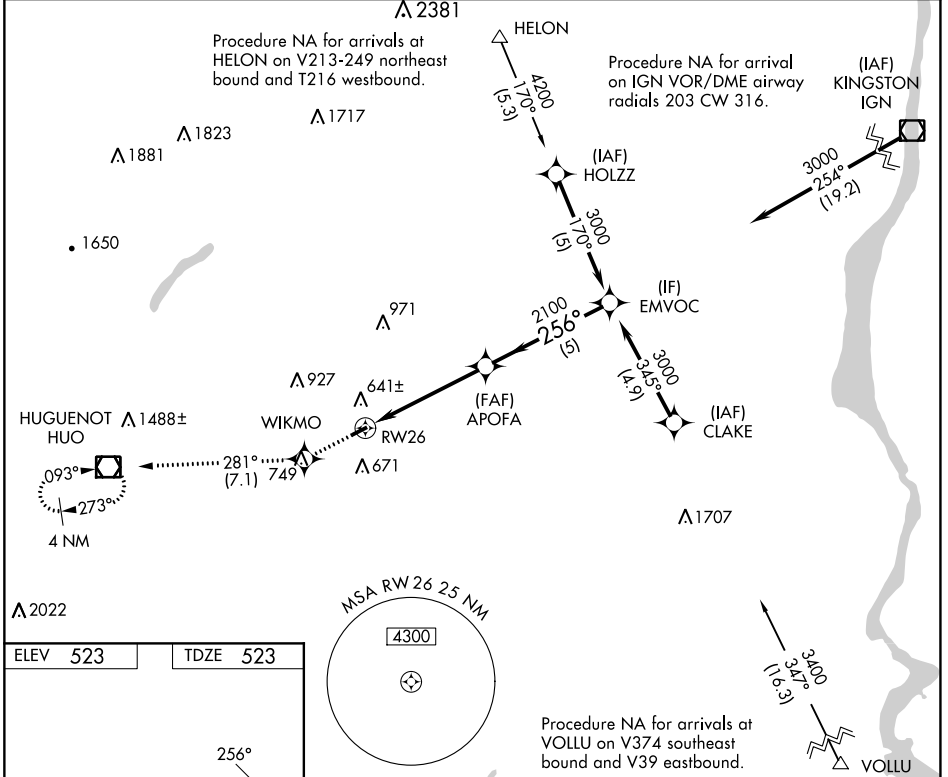
# RNAV (GPS) RWY 26

RANDALL (Ø6N)

RNP APCH. Procedure NA at night. Rwy 26 helicopter visibility reduction below 1 SM NA. Use Newburgh altimeter setting; when not received, use Montgomery altimeter setting.

MISSED APPROACH: Climb to 3500 direct WIKMO and on track 281° to HVO VOR/DME and hold, continue climb-in-hold to 3500.

NEW YORK APP CON <b>132.75 363.1</b>	UNICOM <b>122.8 (CTAF) 0</b>
---	---------------------------------



NE-2, 05 SEP 2024 to 03 OCT 2024

NE-2, 05 SEP 2024 to 03 OCT 2024