

VOR/DME H <sup>UO</sup>	APP CRS	Rwy Idg	<b>3358</b>
<b>116.1</b>	<b>039°</b>	TDZE	<b>548</b>
Chan <b>108</b>		Apt Elev	<b>548</b>

# VOR/DME or GPS RWY 5

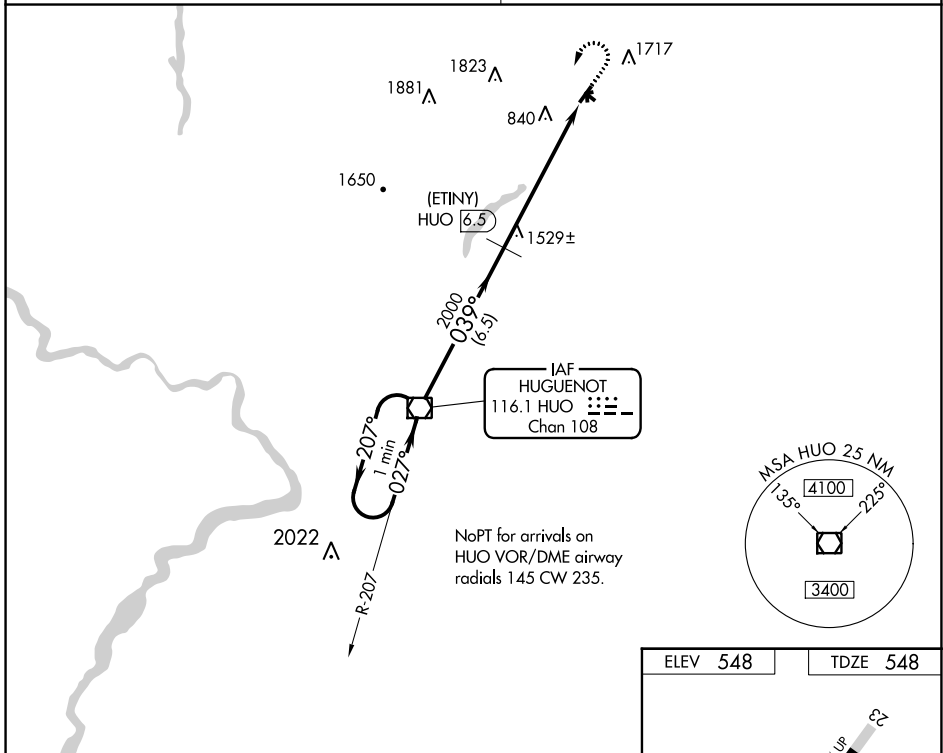
WURTSBORO/SULLIVAN COUNTY (N82)

▼ Obtain local altimeter setting on CTAF, when not received, procedure NA. Procedure not authorized at night. Circling Cat B/C NA north of Rwy 9/27. Helicopter visibility reduction below 1 SM NA.

MISSED APPROACH: Climb to 2300 then climbing left turn to 3500 direct H<sup>UO</sup> VOR/DME and hold.

NEW YORK APP CON  
**132.75 363.1**

UNICOM  
**122.8 (CTAF)**



NE-2, 05 SEP 2024 to 03 OCT 2024

NE-2, 05 SEP 2024 to 03 OCT 2024

ELEV <b>548</b>	TDZE <b>548</b>
-----------------	-----------------

