

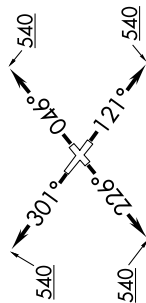
MMALT SEVEN DEPARTURE (RNAV)

SC-5, 05 SEP 2024 to 03 OCT 2024

RNAV 1 - DME/DME/IRU or GPS.

RADAR required.

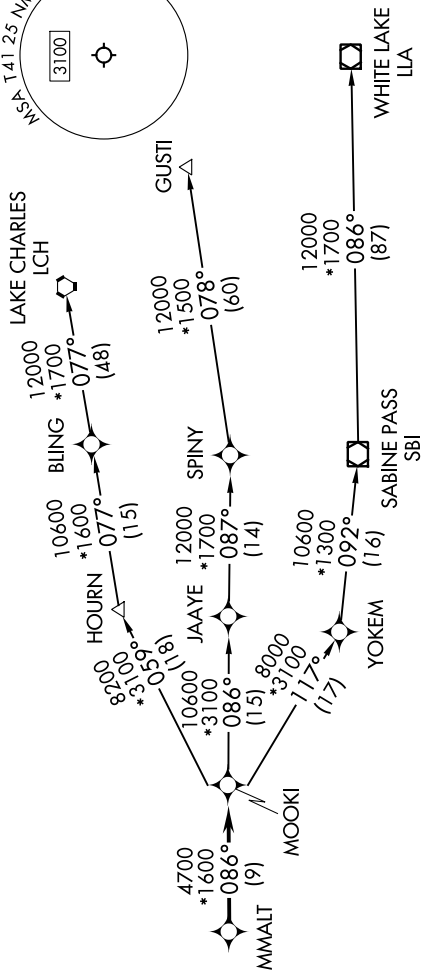
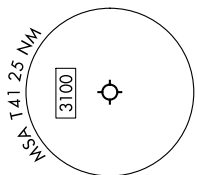
HOUSTON DEP CON
134.45 284.0
CLNC DEL
125.6
CTAF
122.7



TAKEOFF MINIMUMS
Rwys 5, 12, 23, 30: Standard with minimum climb of 500'/NM to 540.

NOTE: Chart not to scale.

**TOP ALTITUDE:
ASSIGNED BY ATC**



NOTE: GUSTI and LCH Transitions ATC assigned only for aircraft departing AXH, EFD, GLS, HPY, IWS, LBX, LVJ, SGR, TME, T00, T41 and 541.

DEPARTURE ROUTE DESCRIPTION

- TAKEOFF RUNWAY 5:** Climb on heading 046° to 540, for RADAR vectors to MMALT, thence. . . .
- TAKEOFF RUNWAY 12:** Climb on heading 121° to 540, for RADAR vectors to MMALT, thence. . . .
- TAKEOFF RUNWAY 23:** Climb on heading 226° to 540, for RADAR vectors to MMALT, thence. . . .
- TAKEOFF RUNWAY 30:** Climb on heading 301° to 540, for RADAR vectors to MMALT, thence. . . .

. . . on track 086° to MOOKI, then on (transition). Maintain ATC assigned altitude. Expect filed altitude 10 minutes after departure.

- GUSTI TRANSITION (MMALT7.GUSTI)
- LAKE CHARLES TRANSITION (MMALT7.LCH)
- WHITE LAKE TRANSITION (MMALT7.LLA)

MMALT SEVEN DEPARTURE (RNAV)

SC-5, 05 SEP 2024 to 03 OCT 2024