

(STYCK8.STYCK) 21280

AL-5433 (FAA)

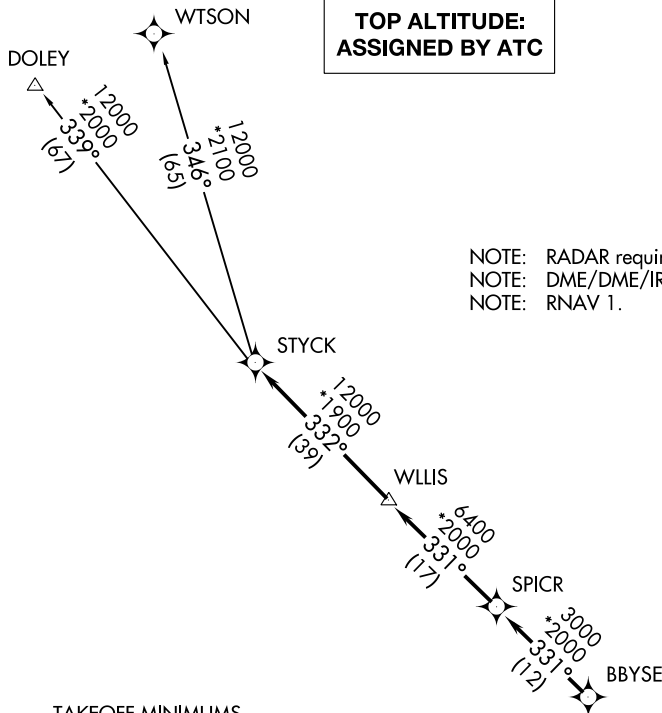
LA PORTE MUNI (T41)

STYCK EIGHT DEPARTURE (RNAV)

LA PORTE, TEXAS

**TOP ALTITUDE:
ASSIGNED BY ATC**

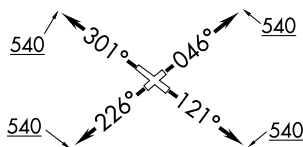
CLNC DEL
125.6
CTAF
122.7
HOUSTON DEP CON
134.45 284.0



NOTE: RADAR required.
NOTE: DME/DME/IRU or GPS required.
NOTE: RNAV 1.

TAKEOFF MINIMUMS

Rwys 5, 12, 23, 30: Standard with minimum climb of 500' per NM to 540.



NOTE: Chart not to scale.

DEPARTURE ROUTE DESCRIPTION

- TAKEOFF RUNWAY 5: Climb on heading 046° to 540 for RADAR vectors to BBYSE, thence. . .
- TAKEOFF RUNWAY 12: Climb on heading 121° to 540 for RADAR vectors to BBYSE, thence. . .
- TAKEOFF RUNWAY 23: Climb on heading 226° to 540 for RADAR vectors to BBYSE, thence. . .
- TAKEOFF RUNWAY 30: Climb on heading 301° to 540 for RADAR vectors to BBYSE, thence. . .

. . .on track 331° to SPICR, then on track 331° to WLLIS, then on track 332° to STYCK, then on (transition). Maintain ATC assigned altitude. Expect filed altitude 10 minutes after departure.

DOLEY TRANSITION (STYCK8.DOLEY)
WTSON TRANSITION (STYCK8.WTSON)

STYCK EIGHT DEPARTURE (RNAV)

(STYCK8.STYCK) 07OCT21

LA PORTE, TEXAS

LA PORTE MUNI (T41)

SC-5, 05 SEP 2024 to 03 OCT 2024

SC-5, 05 SEP 2024 to 03 OCT 2024