

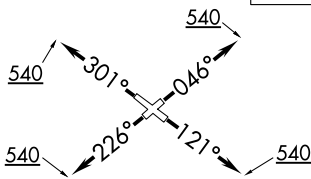
WATFO SIX DEPARTURE (RNAV)

RNAV 1 - DME/DME/IRU or GPS.

RADAR required.

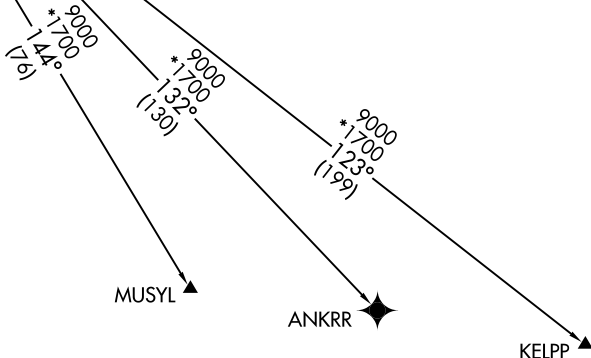
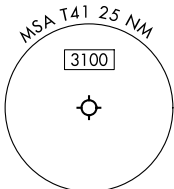
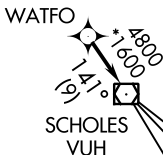
**TOP ALTITUDE:
ASSIGNED BY ATC**

CTAF
122.7
CLNC DEL
125.6
HOUSTON DEP CON
134.45 284.0



TAKEOFF MINIMUMS:

Rwy 5, 12, 23, 30: Standard with minimum climb of 500'/NM to 540.



NOTE: Chart not to scale.



DEPARTURE ROUTE DESCRIPTION

- TAKEOFF RUNWAY 5: Climb on heading 046° to 540, for RADAR vectors to WATFO, thence. . . .
- TAKEOFF RUNWAY 12: Climb on heading 121° to 540, for RADAR vectors to WATFO, thence. . . .
- TAKEOFF RUNWAY 23: Climb on heading 226° to 540, for RADAR vectors to WATFO, thence. . . .
- TAKEOFF RUNWAY 30: Climb on heading 301° to 540, for RADAR vectors to WATFO, thence. . . .

. . . on track 141° to VUH VOR/DME, then on (transition). Maintain ATC assigned altitude. Expect filed altitude 10 minutes after departure.

- ANKRR TRANSITION (WATFO6.ANKRR)
- KELPP TRANSITION (WATFO6.KELPP)
- MUSYL TRANSITION (WATFO6.MUSYL)

SC-5, 05 SEP 2024 to 03 OCT 2024

SC-5, 05 SEP 2024 to 03 OCT 2024