

LOC I-ENW <b>109.35</b>	APP CRS <b>068°</b>	Rwy ldg <b>6600</b>
		TDZE <b>742</b>
		Apt Elev <b>742</b>

# ILS or LOC RWY 7L

KENOSHA RGNL (ENW)

DME required for LOC only. RNAV 1-GPS required.

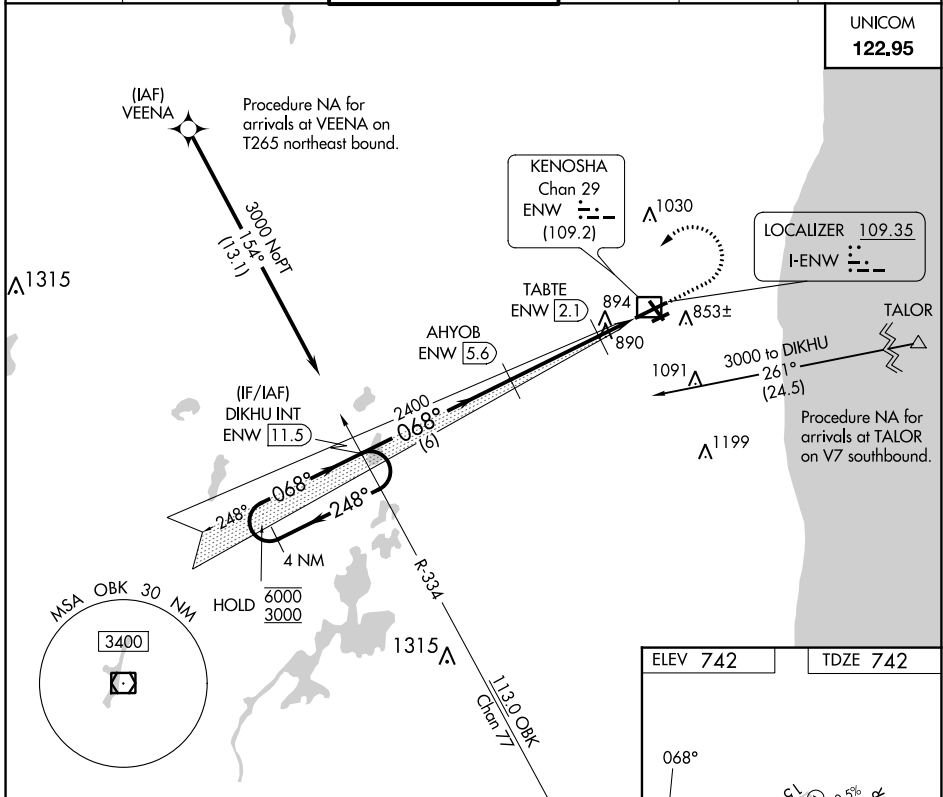
**⚠** Circling Rwy 7R, 15 NA at night.



MISSED APPROACH: Climb to 2500 then climbing left turn to 3000 direct DIKHU and hold.

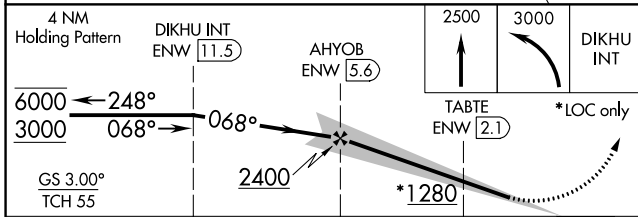
ATIS <b>127.175</b>	MILWAUKEE APP CON <b>135.875 317.725</b>	KENOSHA TOWER * <b>118.6 (CTAF) 0 353.6</b>	GND CON <b>121.875</b>	CLNC DEL <b>121.875</b>	CLNC DEL <b>118.6</b> (When twr closed)
------------------------	---	--	---------------------------	----------------------------	---

UNICOM  
**122.95**

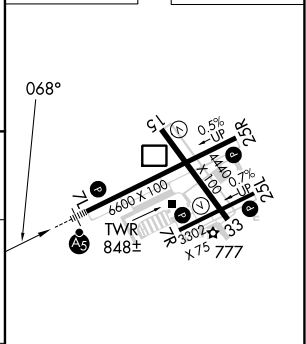


EC-3, 05 SEP 2024 to 03 OCT 2024

EC-3, 05 SEP 2024 to 03 OCT 2024



ELEV 742	TDZE 742
----------	----------



CATEGORY	A	B	C	D
S-ILS 7L	942-1/2 200 (200-1/2)			
S-LOC 7L	1140-1/2	398 (400-1/2)	1140-3/4	398 (400-3/4)
<b>C</b> CIRCLING	1200-1 458 (500-1)	1340-1 598 (600-1)	1400-1 3/4 658 (700-1 3/4)	1440-2 1/4 698 (700-2 1/4)

MIRL Rwy 7R-25L	
HIRL Rwy 7L-25R and 15-33	
REIL Rwy 25R	
FAF to MAP 5 NM	
Knots	60 90 120 150 180
Min:Sec	5:00 3:20 2:30 2:00 1:40