

APP CRS	Rwy ldg	4440
146°	TDZE	721
	Apt Elev	742

RNAV (GPS) RWY 15

KENOSHA RGNL (ENW)

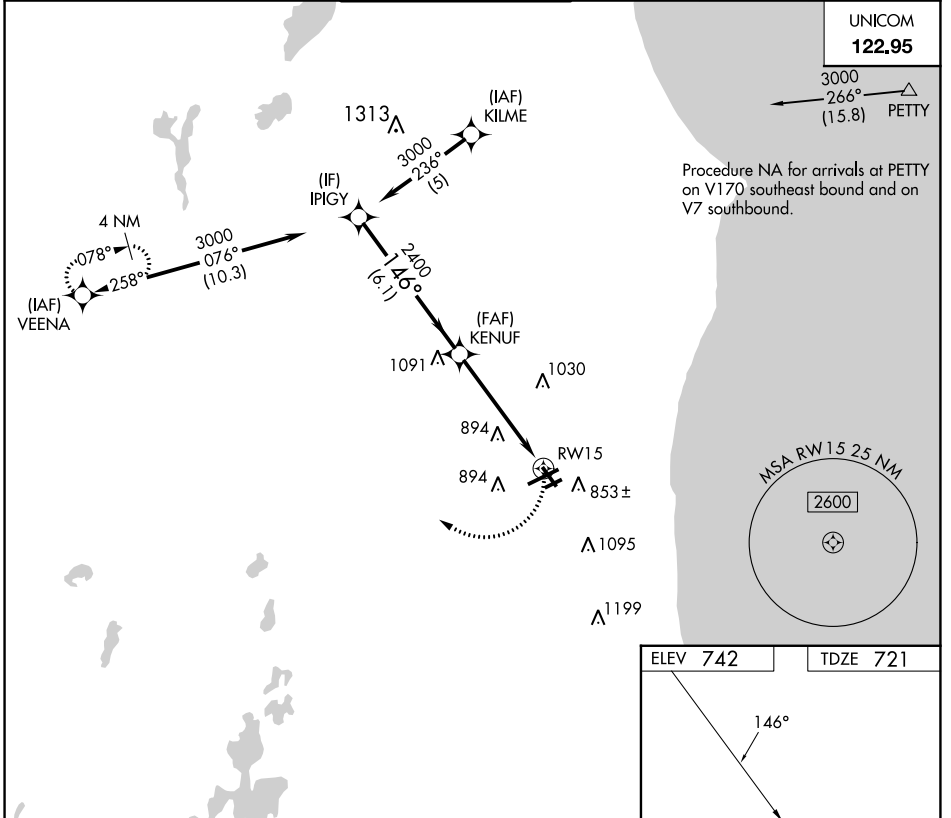
RNP APCH.

▼ Rwy 15 helicopter visibility reduction below 1 SM NA. Straight-In and Circling Rwy 15 NA at night, Circling Rwy 7R NA at night.

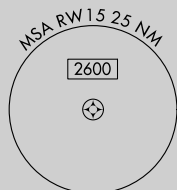
MISSED APPROACH:
Climbing right turn to 3000
direct VEENA and hold.

ATIS 127.175	MILWAUKEE APP CON 135.875 317.725	KENOSHA TOWER * 118.6 (CTAF) 0 353.6	GND CON 121.875	CLNC DEL 121.875	CLNC DEL 118.6 (When twr closed)
------------------------	---	--	---------------------------	----------------------------	---

UNICOM
122.95

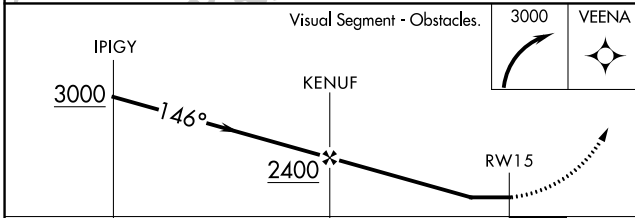


Procedure NA for arrivals at PETTY on V170 southeast bound and on V7 southbound.



EC-3, 05 SEP 2024 to 03 OCT 2024

EC-3, 05 SEP 2024 to 03 OCT 2024



ELEV 742	TDZE 721
----------	----------

MIRL Rwy 7R-25L **0**
HIRL Rwys 7L-25R and 15-33 **0**
REIL Rwy 25R **0**