

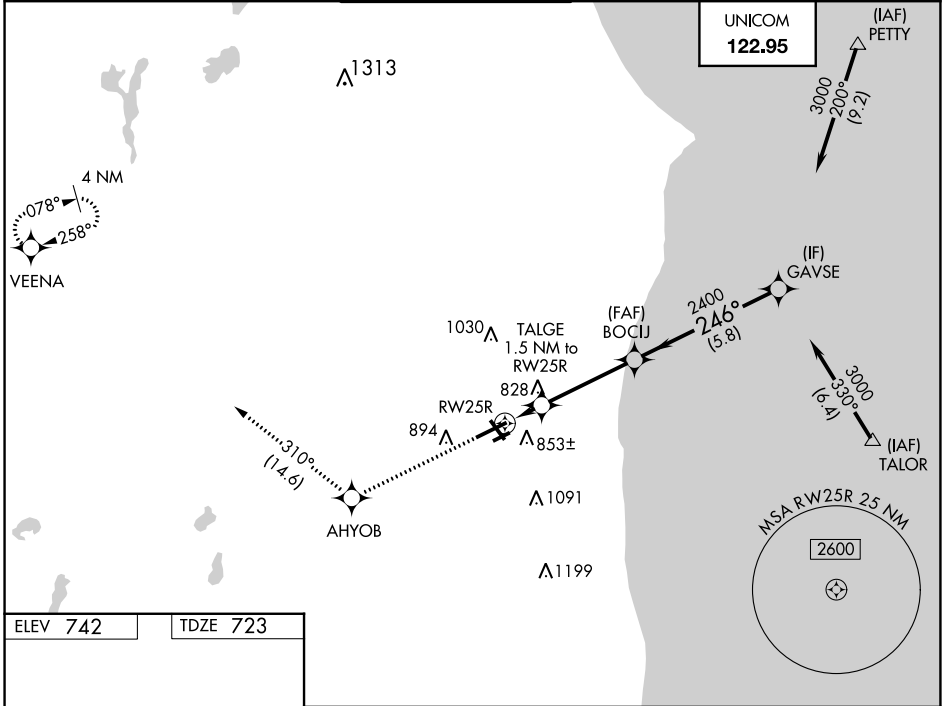
WAAS CH <b>49014</b> <b>W25A</b>	APP CRS <b>246°</b>	Rwy Ldg TDZE <b>723</b> Apt Elev <b>742</b>	<b>6600</b>
--	------------------------	---	-------------

# RNAV (GPS) RWY 25R

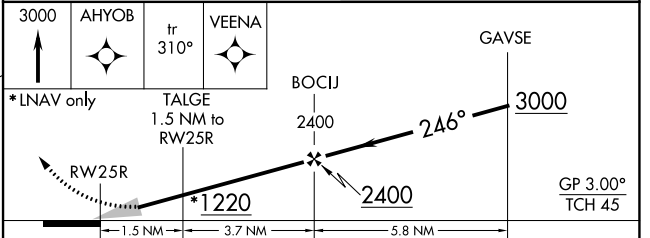
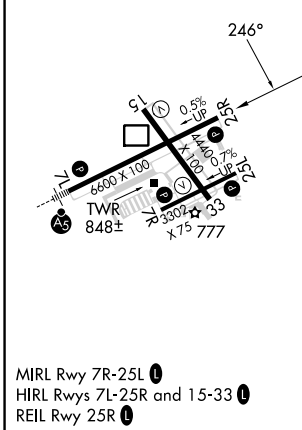
KENOSHA RGNL (ENW)

RNP APCH.		MISSED APPROACH: Climb to 3000 direct AHYOB and on track 310° to VEENA and hold.	
<p><b>⚠</b> Circling Rwy 7R, 15 NA at night. For uncompensated Baro-VNAV systems, LNAV/VNAV NA below -23°C or above 54°C.</p>			

ATIS <b>127.175</b>	MILWAUKEE APP CON <b>135.875 317.725</b>	KENOSHA TOWER ★ <b>118.6 (CTAF) 0 353.6</b>	GND CON <b>121.875</b>	CLNC DEL <b>121.875</b>	CLNC DEL <b>118.6</b> (When twr closed)
------------------------	---	--	---------------------------	----------------------------	---



ELEV 742	TDZE 723
----------	----------



CATEGORY	A	B	C	D
LPV DA		923- <sup>3</sup> / <sub>4</sub>	200 (200- <sup>3</sup> / <sub>4</sub> )	
LNAV/VNAV DA		984- <sup>7</sup> / <sub>8</sub>	261 (300- <sup>7</sup> / <sub>8</sub> )	
LNAV MDA		1080-1	357 (400-1)	
<b>C</b> CIRCLING	1200-1 458 (500-1)	1340-1 598 (600-1)	1400-1 <sup>3</sup> / <sub>4</sub> 658 (700-1 <sup>3</sup> / <sub>4</sub> )	1440-2 <sup>1</sup> / <sub>4</sub> 698 (700-2 <sup>1</sup> / <sub>4</sub> )