

WAAS CH 50314 W07A	APP CRS 066°	Rwy Idg TDZE 742 Apt Elev 742
--	------------------------	---

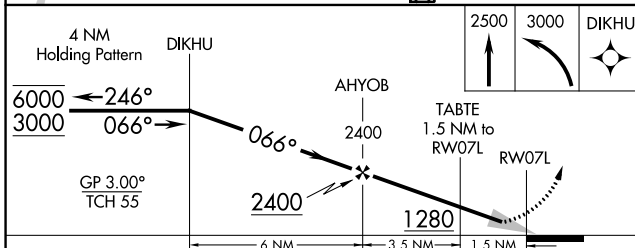
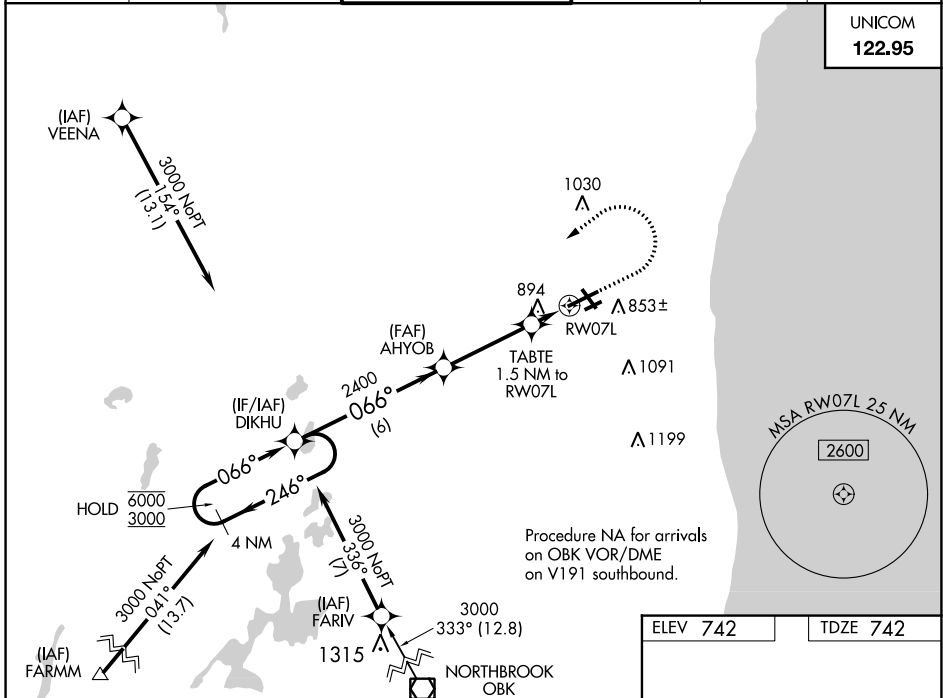
RNAV (GPS) RWY 7L

KENOSHA RGNL (E.N.W)

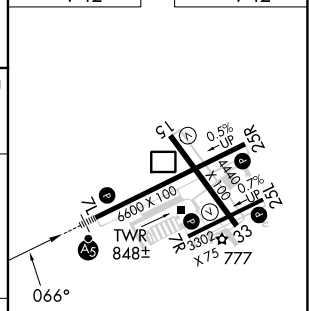
RNP APCH - GPS.		MALSR 	MISSED APPROACH: Climb to 2500 then climbing left turn to 3000 direct DIKHU and hold.
<p>⚠ Circling Rwy 7R, 1.5 NA at night. For uncompensated Baro-VNAV systems, LNAV/VNAV NA below -19°C or above 54°C. For inop ALS, increase LNAV Cat C/D visibility to 1 1/8 SM.</p>			

ATIS 127.175	MILWAUKEE APP CON 135.875 317.725	KENOSHA TOWER ★ 118.6 (CTAF) 0 353.6	GND CON 121.875	CLNC DEL 121.875	CLNC DEL 118.6 (When twr closed)
------------------------	---	--	---------------------------	----------------------------	---

UNICOM
122.95



ELEV 742	TDZE 742
----------	----------



CATEGORY	A	B	C	D
LPV DA	942-1/2		200 (200-1/2)	
LNAV/VNAV DA	1181-3/4		439 (500-3/4)	
LNAV MDA	1160-1/2 418 (500-1/2)		1160-3/4 418 (500-3/4)	
CIRCLING	1200-1 458 (500-1)	1340-1 598 (600-1)	1400-1 3/4 658 (700-1 3/4)	1440-2 1/4 698 (700-2 1/4)

MIRL Rwy 7R-25L **Ⓛ**
HIRL Rwy 7L-25R and 15-33 **Ⓛ**
REIL Rwy 25R **Ⓛ**

EC-3, 05 SEP 2024 to 03 OCT 2024

EC-3, 05 SEP 2024 to 03 OCT 2024